

The Ipswich Charter 825 Project for schools

KEY STAGE 3

Produced by Dale Banham
September 2024



The Ipswich Charter 825 Project for schools

ENQUIRY 1:

Why was Ipswich a
significant place in
1200?



INTRODUCTION

Why was Ipswich a **significant** place in 1200?

Not all places in England were awarded a charter as early as 1200. People living today in Ipswich might not think it, but Ipswich is a very historically significant place. It is one of England's oldest towns (some claim that it is England's oldest inhabited town).

When the burgesses gathered in **St Mary le Tower churchyard** on 29 June 1200, to celebrate receiving the charter, their town was already several centuries old.

There has been a settlement, originally called **Gipeswic**, at the head of the Orwell estuary at least since the 7th century AD.

THINK & DISCUSS:

What do you know already about the history of Ipswich?

Why did people settle in Ipswich?

Did Ipswich have links with mainland Europe?



TASK: How can we prove that Ipswich was historically significant?

Use the INFORMATION SHEETS to research the history of Ipswich.

Historians need to be able to provide evidence to support the arguments they construct.

Use the table below to record reasons why you think that Ipswich is historically significant. What made it an important place in the Anglo-Saxon and Medieval periods?

What evidence did you find?	How does this show Ipswich was important?	How do historians know this?
<i>The Vikings invaded or raided Ipswich in the 9th 10th and 11 centuries.</i>	<i>This shows that Ipswich was valuable to the Vikings</i>	<i>Recorded in the Anglo-Saxon Chronicle</i>

INFORMATION SHEET 1:

Where does the name Ipswich come from?

The oldest known form of Ipswich is Gipeswic, which changed over time to Gyppeswyche and then Y epswich.

There are two parts to the name. There are different views about where the first part of the name comes from. **The first part may represent** one of the following:

- an otherwise unknown personal name, Gip or Gipe
- a reference to gap or gape, and refer to the wide opening of the Orwell estuary
- the river Gipping (a non-tidal river that flows into the river Orwell)

We are far more certain about the second part. 'Wic', marks it as a place of trade. Ipswich had been a focus of trade and industry since the 7th century.

Can you see any clues in Ipswich's seal to support this?

LEARNING POINT: How do historians write about the past?

- Sometimes historians are not sure about things and it is important that we are open about this when we write about the past.
- Historians vary their language using words such as 'may' and 'perhaps' to show that they are less certain about things they are writing about.



INFORMATION SHEET 2

Trade in the Anglo-Saxon Period

- In the 1950s, *archaeological studies* revealed that around 700 AD, potters from the **Netherlands** area settled in Ipswich and set up the first large-scale **potteries** in England since Roman times. Their pots were traded far across England, and the industry was unique to Ipswich for 200 years. With Ipswich growing in wealth, in about 720 AD a large new part of the town was laid out in the **Buttermarket** area.
- Ipswich was a place of national and international importance during the Anglo-Saxon period. The town's **dock** was one of the busiest in the whole country. After the collapse of the Roman Empire, towns on the east coast of England built up trade with Europe, especially Scandinavia. Ipswich was one of the largest ports in England.

Viking raids and Saxon government

- After the invasion of 869, Ipswich fell under Viking rule. Although Saxons drove out the Vikings but the *Anglo-Saxon chronicle* says that the Danes sailed to Ipswich from Kent in 991 and raided the surrounding countryside.
- In the 10th century the West Saxons took control of much of England and divided it into **shires**. Each had a court, ruled over by the king's **sheriff**.
- The shires were divided into **hundreds**, each of which also had a court. The central meeting place of the shire was generally a fortified town, which housed a licensed market and a mint, and had a court of its own, as well as housing the shire court. Ipswich was one of these important Saxon towns.

INFORMATION SHEET 3: Medieval Ipswich

What can the Domesday Book tell us about Ipswich after the Norman conquest?

- The king's lands were managed by the **sheriff**. It does not seem the townsmen were given an opportunity to make changes or have a say in the decisions that the sheriff took.
- There were 12 churches in the town but the local community had suffered as a result of the Conquest. Before the conquest (during the time of Edward the Confessor) there were 538 **burgesses** (a freeman of a borough) who paid dues (taxes) to the King. In 1086 there were only 110, the rest were too poor to pay.
- 328 houses lay in ruins, with no one living there. Some of them were probably knocked down to clear a site for a castle (on the west side of the town). Others may have been destroyed in raids or in the aftermath of **Earl Ralph's rebellion** in 1075-6. This was caused by King William's refusal to let Ralph de Guader (Earl of East Anglia) marry Emma (the daughter of the Earl of Hereford) in 1075.

Ipswich becomes an important centre of trade

- In the 12th century, Ipswich expanded as trade grew with Northern Europe (especially the Rhineland and modern-day Belgium and the Netherlands).
- In 1200 the granting of the charter helped the town to continue to grow. The townspeople were able to show merchants from abroad and from other ports in England that Ipswich was well governed, organised and a safe place to trade.
- We know that by the 14th century, Ipswich was a member of the powerful Hanseatic League. This was a group of wealthy trading towns in northern Europe who joined together to protect and support trade.
- Cloth passed through the port on its way to both to markets in the Low Countries (the Netherlands and Belgium), Scandinavia and even Iceland.
- 29 Imports ranging from salt fish to wine supplied both the town's markets and the rest of Suffolk.
- The wealth that was generated helped to pay for the expansion of old parish churches (see for example, **St Clement's** and **St Margaret's**). Little is left of the merchants' houses of this period, but inventories (lists of objects inside a house) show them to have been very well furnished.

What was Ipswich like in 1200?

The modern borough of Ipswich would seem strange to the earliest inhabitants of Gipeswic, but more familiar to the burgesses of the Middle Ages, who would recognise at least some of its churches and the names and even the lines of some of its streets.

TASK: CONTINUITY & CHANGE – Use Speed’s map of Ipswich to spot similarities and differences between Ipswich then and Ipswich now

What would a medieval person recognise in Ipswich today?

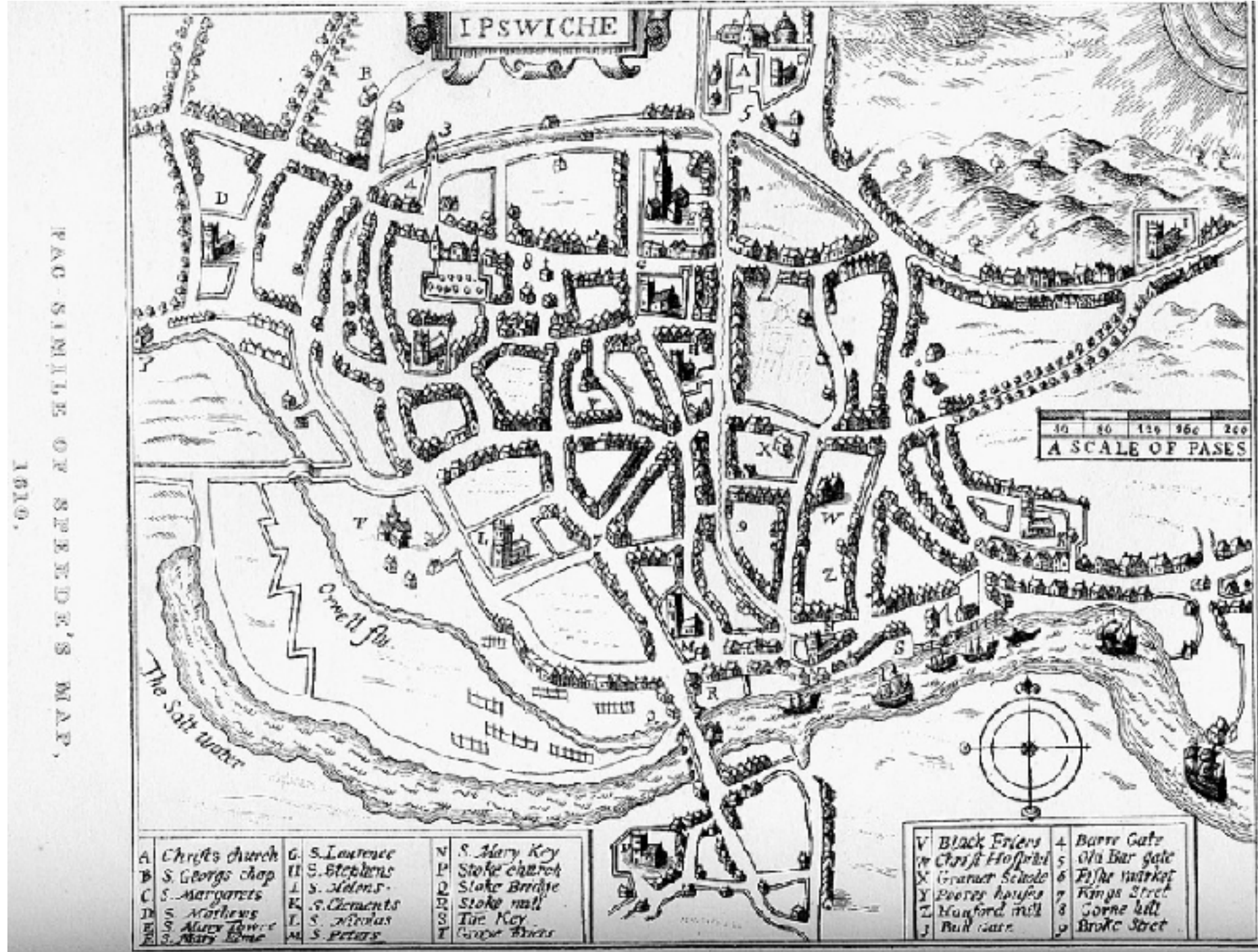
- Buildings
- Streets and roads
- Trade – types of shops or businesses

Speed's map of Ipswich

This was published in *Theatre of The Empire of Great Britaine*. It is the earliest known map of Ipswich and features many buildings of the late medieval period. The street patterns would have been similar.

THINK & DISCUSS

1. When was the map produced?
2. Can you spot where the townspeople met to receive the charter? Circle the place on your map.
3. How many similarities can you find with Ipswich today? How many differences? You could colour code these on your own map.
4. What surprises



ENQUIRY 1: Why did a charter matter to people living in Ipswich?



This picture shows a charter that was granted to Ipswich by **Richard II**.

THINK & DISCUSS

1. What time period do you think it was from?
2. How can you tell that a charter was an important document and meant a lot to people at the time?
3. What does the picture show? Why are people kneeling?

Richard II's charter (1380)



- The initial letter R is illuminated in **gold leaf**, red, blue and green.
- It shows the King on a **throne** (enthroned) and wearing a **crown**.
- The **King** is bestowing (granting / giving) the charter to **burgesses** (important people from the town). They are kneeling out of a sign of respect to the King and to show how grateful they are.
- The King wears fine clothes and is positioned high on his special golden chair, whilst the burgesses are kneeling down and reaching up. It shows that in the Middle Ages, power clearly sits with the king.
- Richard II was not the first King to grant a charter to the people of Ipswich. The burgesses of Ipswich first received a charter from their monarch in 1200.

How useful is the 1200 Ipswich Charter to a historian?

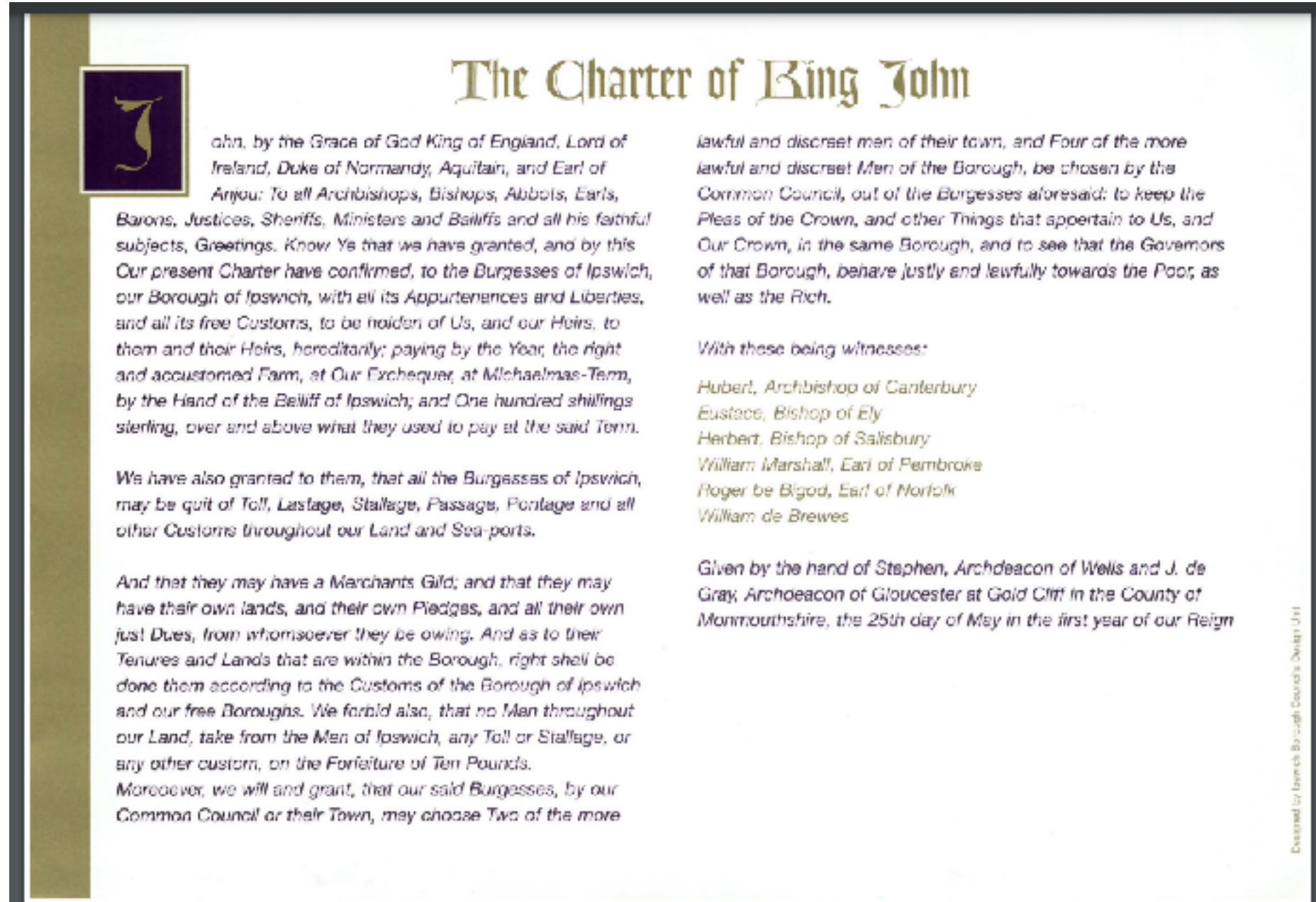
THINK & DISCUSS

What does the Charter tell us about:

1. Who granted the Charter?
What can you find out about them?

2. Who benefitted from it?
How did they benefit?

3. How much did they pay?



The Charter of King John

John, by the Grace of God King of England, Lord of Ireland, Duke of Normandy, Aquitaine, and Earl of Anjou: To all Archbishops, Bishops, Abbots, Earls, Barons, Justices, Sheriffs, Ministers and Bailiffs and all his faithful subjects, Greetings. Know Ye that we have granted, and by this Our present Charter have confirmed, to the Burgesses of Ipswich, our Borough of Ipswich, with all its Appurtenances and Liberties, and all its free Customs, to be holden of Us, and our Heirs, to them and their Heirs, hereditarily; paying by the Year, the right and accustomed Farm, at Our Exchequer, at Michaelmas-Term, by the Hand of the Bailiff of Ipswich; and One hundred shillings sterling, over and above what they used to pay at the said Term.

We have also granted to them, that all the Burgesses of Ipswich, may be quit of Toll, Lestage, Stallage, Passage, Portage and all other Customs throughout our Land and Sea-ports.

And that they may have a Merchants Gild; and that they may have their own lands, and their own Pledges, and all their own just Dues, from whomsoever they be owing. And as to their Tenures and Lands that are within the Borough, right shall be done them according to the Customs of the Borough of Ipswich and our free Boroughs. We forbid also, that no Man throughout our Land, take from the Men of Ipswich, any Toll or Stallage, or any other custom, on the Forfeiture of Ten Pounds. Moreover, we will and grant, that our said Burgesses, by our Common Council or their Town, may choose Two of the more

lawful and discreet men of their town, and Four of the more lawful and discreet Men of the Borough, be chosen by the Common Council, out of the Burgesses aforesaid: to keep the Pleas of the Crown, and other Things that appertain to Us, and Our Crown, in the same Borough, and to see that the Governors of that Borough, behave justly and lawfully towards the Poor, as well as the Rich.

With these being witnesses:

*Hubert, Archbishop of Canterbury
Eustace, Bishop of Ely
Herbert, Bishop of Salisbury
William Marshall, Earl of Pembroke
Roger de Bigod, Earl of Norfolk
William de Brewes*

Given by the hand of Stephen, Archdeacon of Wells and J. de Gray, Archdeacon of Gloucester at Gold Cliff in the County of Monmouthshire, the 25th day of May in the first year of our Reign

Designed by Ipswich Borough Council's Design Unit

How useful is the 1200 Ipswich Charter to a historian?

THINK & DISCUSS

What does the Charter tell us about:

1. Who granted the Charter?
What can you find out about them?
2. Who benefitted from it?
How did they benefit?
3. How much did they pay?
4. What does this tell us about the way that medieval towns and medieval England were changing?

What powers and privileges did Ipswich gain from its charter?

- In the charter King John gave the **burgesses** of the borough of Ipswich the power to take their own decisions about how the town was governed and organised. Most charters gave towns similar powers. However, the power to govern the town in the way that they wanted came at a cost. The burgesses had to pay the King 100 shillings (£5) more than the sheriff had paid the King to control Ipswich.
- The burgesses were granted the freedom to travel throughout John's lands without having to pay a toll.
- They could have a merchant guild, an organisation that nearly all merchants joined that protected trade.
- The burgesses did not have to house royal officers.
- They could choose their own magistrates (Justices of the Peace who kept law and order); two Bailiffs (who carried out decisions made by the court), and four Coroners to ensure that the Bailiffs did justice to rich and poor alike.

How do we know about Ipswich's charter?

- The original Charter granted by John no longer exists. What happened to it remains a mystery. The last recorded reference to it is 1696, when it was in Ipswich's town treasury.
- However, the terms of the charter are entered on the Charter Roll in the Public Record Office, and its text is recited in full in **Edward I's Charter for Ipswich of 1291** (a copy of which is in the Hold Archive in Ipswich, the seal from this charter is shown opposite).
- The terms of John's charter are also repeated in most subsequent charters that were granted to Ipswich monarchs between 1200 and 1560, when Elizabeth I confirmed the charter.
- In addition, **the Hold archive in Ipswich** contains evidence from John's reign. A unique account of the meetings that took place after John granted the charter exists. This helps us understand how the burgesses of Ipswich developed a new way of governing the town.



What were the **consequences** of Ipswich receiving a charter?

SHORT-TERM CHANGES : What happened next? How did the burgesses of Ipswich use their new powers?

On 29 June the townsmen assembled in St Mary le Tower churchyard to hear the charter read, and to celebrate their new status. They also elected the Bailiffs and Coroners. After the first meeting, they held four further meetings (ending on 12 October 1200).

- They elected **12 Chief Portmen**, chosen by panels representing each parish of the town, to govern the borough and protect its new freedoms.
- They elected two **Beadles** (or Serjeants) to help keep order.
- They approved the making of a common **seal** for Ipswich (see later).
- They ordered that the charter be sent to be read in the county courts of Suffolk and Norfolk.
- They appointed an **alderman** to oversee the new gild for merchants, along with four associates to support his work.
- They granted the **meadow** called Odenholm (now under **Portman Road**), as a place to graze the Chief Portmen's horses.

Why are Ipswich's records of what happened after the King granted the town a charter so important?

- They decided to write down the laws and customs of the town in a roll to be called Domesday, and the ordinances (decisions) of the gild in another roll.
- Other towns may have kept similar records and taken similar steps to the burgesses of Ipswich but only the Ipswich documents survive.

THINK & DISCUSS

What makes these so documents so important to historians?

What were the long-term **consequences** of Ipswich receiving a charter?

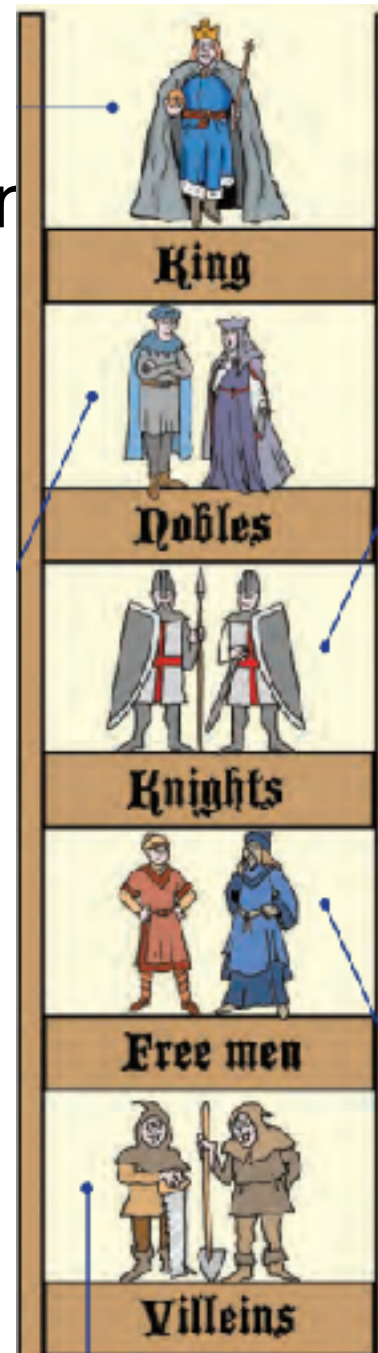
- As you can see from the previous slide detailed the short-term consequences of the charter, the townspeople of Ipswich moved very quickly to organise themselves and set up a detailed and efficient way to run their town. The town seal (see opposite) showed that important documents and the approval of Ipswich's government.
- The rules they introduced and the very effective way they ran the town helped to attract merchants from England and Europe to the town to trade goods. In the fourteenth century the well organised way that the town played an important role in Ipswich being accepted into the **Hanseatic League** (a powerful and wealthy group of towns with docks that connected ports across Northern and Eastern Europe). Ipswich was an important headquarters for the Hanseatic League and traded with merchants from Poland, Estonia, Iceland, Norway, Holland and Belgium.
- Even during times of conflict (such as the Civil War), Ipswich remained a relatively wealthy and important town. Ever since 1200, the rights and freedoms granted to Ipswich had given the town a status as great as any other chartered borough and this helped the town to thrive and prosper. In 1610, the historian **John Speed** produced his map of Suffolk. He described Ipswich in the following way.



'Ipswich (the onely eie) of this Shire . . . might worthily haue borne the title of a Citie . . . whose trade, circuite, and seat, dothe equall most places of the Land'

How did the charter **change** the status of people living in the town

- Town charters in the Middle Ages **made the inhabitants 'free'**. As a result of the charter, the townsmen of Ipswich had a very different status to most people who lived in the countryside. As part of the feudal system, most people in England were villeins (peasants or serfs) who were bound to serve the local lord. **England in c1200**
- England's population was around 3.5 million. Wealth and power was not shared out equally among the population. The ladder shows the different groups within society and their place in the **feudal hierarchy**. The higher up the ladder you were, the more wealth, power and freedom you had.
- It was very hard to move up the ladder and become wealthier and more powerful. If you were born a peasant it was highly likely that you would spend your whole life as a peasant. Each group had its own price, known as a 'wergild' (which translates as 'man-price'). If you killed a lord (a noble or a knight), you paid his family 1,200 shillings. If you killed a villein, you paid 200.



At the top of medieval society was the king. Richard and John were far more powerful than a modern-day monarch. A medieval monarch was tremendously rich and powerful. Kings decided how the country would be governed and made all the key decisions.

Nobles received land from the King. In return they had to promise to help him rule the country and supply an agreed number of **knights** to fight for him. Leading nobles were known as **barons**. These barons were closest to the king in terms of rank and status

A **free man** could be a merchant, a professional soldier, a craftsman or a farmer who was a free tenant. Free men were free to travel and work for whomever they chose.

Villeins worked on their lord's land or for a free. In return for this they were allowed to work a tiny piece of land for themselves, living off the crops they produced. They had no rights whatsoever and even had to ask permission for their daughters to marry. Villeins could not leave their manor (village) without permission and they could be bought and sold by their lord.

CHARTER CHALLENGE: Write a **poem** or **lyrics** for a song about how Ipswich gained a charter and why it was important

TIPS

Aim to include historical details in your poem or song.

You could cover some or all of the key questions we have studied:

What was the charter?

When did Ipswich receive it?

Where did the townspeople go to hear it and celebrate it?

Why did it matter so much to people living at the time?

What were the consequences?

How important was it?

How did Ipswich benefit from receiving the charter.

Who granted Ipswich its charter?



Are you the new Ed?

What **BIG** mistake has the nineteenth century artist made?

19th-century recreation of King John signing the Magna Carta

Credit: [Wikimedia Commons](#)



Medieval kings put their stamp on it!

How did seals (not pens) 'seal the deal'

If you do a google search for 'King John signing the Magna Carta' it is highly likely that you will see lots of pictures like the one opposite. In these pictures, the King is signing a piece of parchment (paper) with a quill dipped in ink. That is not what happened!

- Signatures were not common during medieval times; it was more common to '**stamp**' a legal document using a **wax seal**.
- King John's seal would not have been stamped directly onto the paper. Instead, it was attached to the document by a cord and threaded through a hole at the bottom of the document.
- The King's seal had two sides; an engraving of John's seal is shown opposite. Seals are another very useful source for a historian. The objects and **symbolism** in the images contained important messages about how medieval monarchs saw themselves and what people at the time wanted from their King.



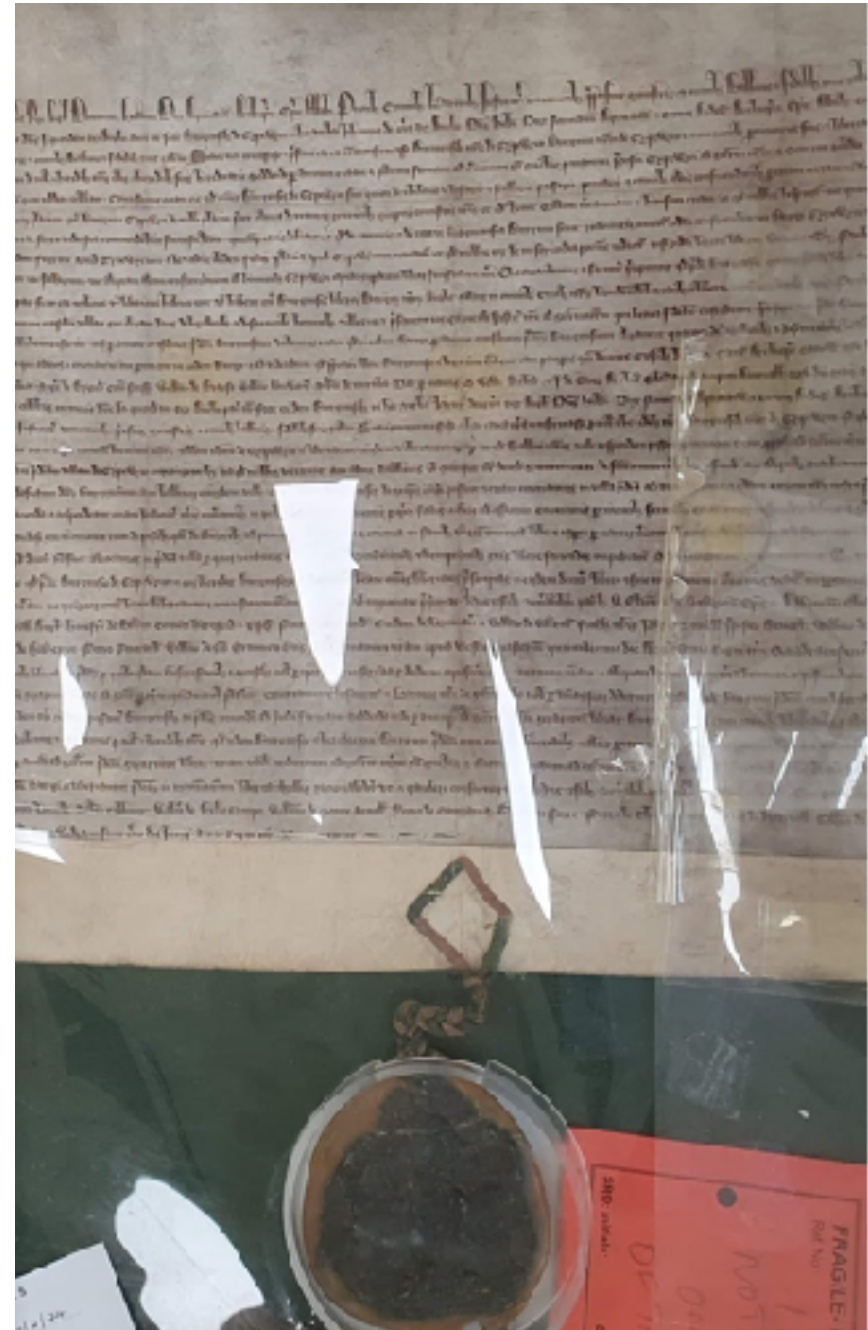
Edward I's seal, attached to the charter he granted to Ipswich in 1291



The Great Seal was used to show the monarch's approval of a document. Every monarch since Edward the Confessor had used one. **John's seal would have been attached to Ipswich's charter.**

What is missing from Edward's seal in the Ipswich archive is around the edge of this example is the lettering around the edge of the image. This would have said 'Edward by the Grace of God, King of England, Lord of Ireland, Duke of Aquitaine'.

What has survived in the middle is Edward on his very grand throne. You can just make out an **orb** in his left hand and **sceptre** in his right.



What does King John's seal tell us about how medieval monarchs wanted to be viewed?



What can John's seal tell us about medieval monarchy?

The seal you see in the images below is a replica of the obverse of John's seal. It was made by Wendy and Alan Alstin of History Box, in Suffolk, England. Cast from an original King John seal, this seal measures 96 millimeters in diameter.

THINK & DISCUSS

What symbolism can you see in this image?

What is John holding in each hand? What is this a symbol of?

What message is the King giving his people?



What can John's seal tell us about medieval monarchy?

- On the obverse (front) of the seal, King John is seated upon the throne.
- He wears a three-pointed **crown** (a symbol of royal power).
- He holds a **sword** in his right hand, symbolising his **power**.
- In his left hand, he holds the sovereign's **orb** that is sprouting a plant-like stem, on top of which is a **cross** (the orb represents the earth, and the cross represents Christianity. They are symbols of the monarch being **God's representatives on earth**).
- This tells us that medieval monarchs wanted to be seen not only as being in charge of government, but also as representing God and being in charge of religion. It was believed the power of kings and queens came from God
- The text around the king reads: *Iohannes dei gracia rex anglie dominus hibernie* – John the grace of God, King of England, Lord of Ireland.



What can John's seal tell us about medieval monarchy?

THINK & DISCUSS

What symbolism can you see in this image?

What message is the King giving his people?



What can John's seal tell us about medieval monarchy?

- On the reverse, King John is mounted on **horseback**, again with his **sword** in hand.
- He wears a flat-topped **helmet** instead of a crown and carries a **shield**.
- The text on this side reads: *lohs dvx normannie et Aqvitannie comes Andegavie* – John [in shorthand], Duke of Normandy and Aquitaine, Count of Anjou.



What can a seal tell us about Ipswich in 1200?

Many people would have had seals but the monarch's was the biggest. This seal was created and used by the burgesses of Ipswich a few months after the granting of the town charter by King John in 1200. It was used to show that a document had the approval of the town's government. Like the King's seal, it was a symbol of power and authority.

THINK & DISCUSS

1. What does the writing around the edge of the seal say?
2. What does the image suggest about Ipswich at that time?
3. Why is this source useful to a historian?



What can Ipswich's seal tell us?



A few months after the granting of Ipswich's charter, the town's newly-formed government designed a town seal. The seal is still kept at Ipswich Town Hall (on the Cornhill).

- Around the circumference of the seal the inscription says:

SI(GILLUM) COMUNITATIS VILLE GYPEWICI'

or in English: 'The master seal of the town of Ipswich'.

- The image shows a ship with two people on board. It shows the type of small coastal vessels that would have been in use by the Ipswich merchants of that time.
- Most historians think that it represents a 'Cog', a cargo ship particularly used by **Hanseatic merchants**. We know that in the 14th century, Ipswich was a member of the powerful Hanseatic League. This was a group of wealthy trading towns in northern Europe who joined together to protect and support trade.
- Some historians claim that this is the first known example anywhere in the world of a **ship with a movable rudder**, as opposed to a steering oar commonly in use during that era.
- The reverse of the seal depicts the Church of St Mildred which has since been destroyed. This church would have stood on the Cornhill.

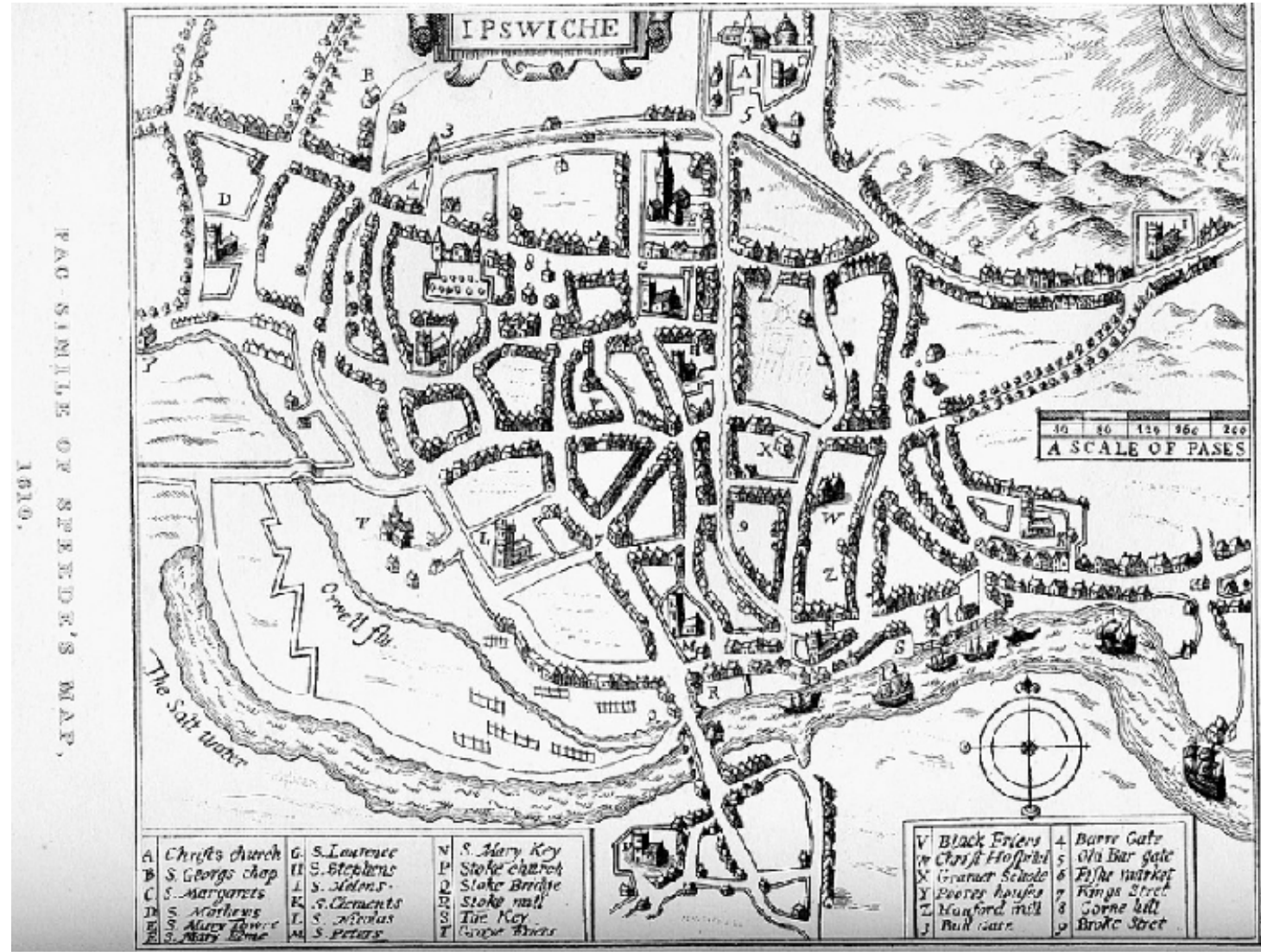
CHARTER CHALLENGE: Design a map of modern-day Ipswich, in the style of John Speed's 1610 map.

THINK & DISCUSS

John Speed's map includes pictures of the important buildings in Ipswich 400 years ago and key geographical features. What pictures are you going to add to your map?

You can't include everything on your map. What do you think the 10 most important buildings or places are in Ipswich.?

These will need to go in the correct place on your map. You can include a key at the bottom.



The Ipswich Charter 825 Project for schools

ENQUIRY 2:

**How do events in the
Middle East and
Normandy explain why
Ipswich was granted a
Charter?**



ENQUIRY 2: How do events in the Middle East and Normandy explain why Ipswich was granted a Charter?

- There was a lot of wealth in medieval towns, but **Henry II** (who ruled England from 1154 to 1189) did not want to give people living in the towns greater powers to rule themselves and the King's sheriffs remained in control of nearly all towns.
- However, as you will see, his sons, Richard and John, were both in need of money so the situation changed. The townsmen of Ipswich wanted to exclude the sheriff and have greater control over what happened in the town. They achieved it by offering to pay more to the king than the sheriff.
- In 1196, Ipswich began to negotiate with **Richard I**. The talks themselves cost money, but the prize was worth it – an opportunity to have a greater say in all the main decisions that effected their town. They had to be patient; the charter was not granted until after Richard's death. Their charter was granted by John, in Normandy, on 25 May 1200.
- **John** did not grant Ipswich a charter out of the goodness of the heart. We must put Ipswich's charter in the context of what was happening in England and Europe at the time. As historians we need to explore the connections between local, national and international events.

THINK & DISCUSS: Look at the pictures of Henry II, Richard I, John and Henry III (John's son) above.

Can you work out who they are?



How does Matthew Paris present John and his father and elder brother

Matthew Paris drew the 4 pictures of the 4 kings on the last slide. He was a monk of St Albans and lived c. 1200–1259. He wrote his chronicles of the history of England over several decades, he is also thought to have drawn the majority of the illustrations.



Self portrait of Matthew Paris from the *Historia Anglorum*, *Royal MS 14 C VII, f. 6r*

The British Library has recently digitised a manuscript containing some of Matthew Paris's historical writings: an abbreviated version of his *Chronica Majora* ('Great History') and *Historia Anglorum*



Henry II is shown looking away from the church. He was the King who fell out with Thomas Becket, the man he appointed as Archbishop of Canterbury. Becket was murdered by Henry's knights in 1170 in Canterbury cathedral.

DISCUSS: What impression is created of Richard I?

How did events in the Middle East and Normandy lead to the Ipswich charter?

In Matthew Paris's illustration Richard is portrayed as a powerful King. He wears the 3-pointed **crown** (showing royal authority) and holds a **shield** and **sword** to show his military skills. Richard spent most of his reign fighting wars in the Middle East and France. Events that happened during Richard's reign and at the start of his brother John's reign help to explain why Ipswich gained its charter in 1200.

RESEARCH TASK

- Use Part 1 of the timeline to make notes on the problems that Richard faced during his reign.
- Use Part 2 of the timeline to make notes on the problems John faced when he became King.
- Use your notes and Part 3 of the timeline to write an account of why Ipswich was granted a charter.



Key events in the lead up to the Ipswich charter - Part 1

1167	<p>John is born on Christmas Eve. He was the fourth son on Henry II and Eleanor of Aquitaine. As Henry's youngest son, John was not expected to become king. In 1185 Henry sent John to extend control over Ireland. The expedition was a failure and John was called home after six months. John first plotted with his brother Richard against his father, and then against Richard when he went on crusade.</p>
1189	<p>Richard I becomes king. Richard was greeted enthusiastically when he arrived in England in 1189. In 1190 Richard left England to tour his lands in France.</p>
1190	<p>Richard sets off on the Third Crusade. Muslim forces, led by Saladin, had captured Jerusalem and the Pope had called for Christians to fight to bring it back. <u>In order to pay for the crusade</u>, Richard raised taxes and sold off everything he could offer – land, offices, earldoms and positions as sheriff.</p>

Saladin

A Christian army had captured the holy city of Jerusalem in 1099 during the First Crusade. The crusades were wars between Christian and Muslim armies in the area around Jerusalem (called the Holy Land). Some crusaders stayed in the Holy Land, gaining more territory from the Muslims who lived in the Middle East. In the second half of the twelfth century the Muslims began to fight back. Their leader, Saladin, created a large, well equipped and well trained army. He was able to reconquer large areas of the crusader kingdom. In 1187 he regained control of Jerusalem. The attempt by a Christian army to win back this land became known as the Third Crusade.

1191



1192

Richard arrives in the Holy Land.

In July, Richard joined forces with **Philip II's** French army to capture the important port of **Acce**. However, Phillip and Richard quarrelled and the French King returned home in August. Despite leading an army that was now weakened, Richard managed to defeat Saladin at the Battle of **Arsur** in September.

However, the main aim of the Third Crusade had been to recapture Jerusalem. Richard attempted to take **Jerusalem** twice, but despite getting close to the Holy City the crusaders failed. Richard agreed a truce with Saladin. Jerusalem remained under Saladin's control but Christians would be allowed to visit the city. The crusaders also kept the ports they had fought so hard for – Jaffa and Acce – as well as the land in between.

Richard is captured.

Richard left the Holy Land in October 1192. He travelled through Europe in disguise, hoping to avoid his enemies, but he was recognised in **Vienna** and imprisoned by the **Duke of Austria**.

He was not released until February 1194, after a huge ransom had been paid. During this time his brother John and **Philip II** plotted to take control of his lands in England and France. By 1194 Phillip had invaded large areas of Richard's lands in France.

1194

Richard wins back his lands in France

Most of England had remained loyal to Richard and, on his return, John was forced to beg for his brother's forgiveness. By 1199 Richard had won back nearly all his land on the Continent.

To defend Normandy and keep Phillip under control, Richard built a huge fortress called **Château Gaillard** on the border between his and Phillip's lands.

Key events in the lead up to the Ipswich charter - Part 2

How did Richard I die?

In March 1199, Richard went to Aquitaine, where the Count of Angouleme and the Viscount of Limoges had rebelled against him. Richard brought up troops to lay siege to the Viscount's castle at Chalus-Chabrol. For three days Richard attacked the castle. His crossbowmen forced the defenders to keep their heads down while his sappers undermined the walls.

The castle was on the verge of surrender when, on the evening of 26 March, Richard left his tent to see how the siege was progressing. Daylight was beginning to fade and, because he was not riding into battle, he wore no armour except for an iron headpiece – relying on his large shield to protect him. Richard had heard that one brave enemy crossbowman, using a frying pan as a shield, had appeared on the ramparts of the castle. As Richard moved towards the castle, this crossbowman aimed an arrow in Richard's direction. Richard, taken by surprise, did not have time to duck behind his shield. The arrow struck his left shoulder.

Richard made no sound, not wishing to alarm his men, and calmly returned to his tent. He tried to pull out the bolt but snapped off the wooden shaft, leaving the iron barb deeply embedded in the flesh. A surgeon did manage to remove the bolt, and Richard was bandaged up, but the wound turned gangrenous and infection spread. Richard died on the evening of 6th April, by which time the castle had fallen to his men.

1199	Richard dies and John becomes King of England. Richard was fatally wounded fighting in France. He named John as his heir. England, Normandy and Aquitaine accepted John as their King. But Anjou, Touraine and Maine supported Arthur of Brittany's claim to the throne. (Arthur was John's 17-year-old nephew). Arthur joined with Philip II and threatened to attack John's lands in France.
1200	Problems in France In 1200, John divorced his wife (Isabella of Gloucester) and married Isabella of Angouleme. Isabella had been promised to Hugh of Lusignan (a powerful French baron). Hugh complained to the King of France that John had not given him any compensation and Philip used this as an excuse to attack John's lands on the Continent.
1200 25 th May	The Ipswich Charter At the time that he granted Ipswich a Charter, John was in Normandy. John's Empire was under threat, and he wanted to make sure that the people in England's large towns remained loyal to him. John also needed to raise money fast. He had to pay for a large army to defend his lands in France. To make matters worse, Richard had left England in financial trouble. John sealed the Ipswich charter in Normandy at Chateau Fouel a les Roches D'Orival, on the River Seine (just a few miles from Rouen).
1200 29 th June	The Charter was probably brought to Ipswich by Gilbert Marshal, a trusted <u>envoy</u> (messenger or representative) of the King. It would have taken the envoy about 5 weeks to travel to Ipswich from Normandy.

Key events in the lead up to the Ipswich charter - Part 3

How did the Angevin Empire link Ipswich with Europe?

- John was not just King of England, he also controlled lots of territory in France (see map). Henry II, Richard I and John ruled over the Angevin Empire. As soon as he heard of Richard's death, **Philip invaded Normandy**. Meanwhile, Arthur swore **homage** (loyalty) to the French King. Arthur posed a significant threat to John. In the minds of some people, he had a better claim than John to be Richard's successor. Arthur was the son of John's older brother.
- John's determination to keep his lands in France and defend his empire help to explain why Ipswich was granted a charter. Kings had a small permanent army which was made up of around a hundred household knights. However, to fight Philip, John needed to raise a large army and recruit professional soldiers from abroad (known as mercenary soldiers). An army also had to be equipped and supplied. All of this was very expensive. Gaining more money from towns such as Ipswich helped to pay for the expense.



In **England**, the **barons** were the most powerful and wealthy group of people in the country. They supplied the king with an army in wartime and helped him maintain law and order. If the king angered the **barons** they could rebel. They had their own castles and armies, so could be a real threat.

Brittany was ruled by **Geoffrey** (Richard and John's brother) until his death in 1186. After Richard died, the barons of Brittany supported Geoffrey's son, **Arthur**, in his claim to the Angevin Empire.

Normandy had been closely linked with England since William of Normandy's invasion in 1066. Many wealthy families held land in both England and Normandy. Richard and John would need to defend Normandy to keep these wealthy barons onside.

The Duchy of **Aquitaine** was a region of great wealth and powerful barons. There were frequent revolts by leading barons in Aquitaine.

Why was Normandy so important to John?

We know that John was in Normandy when he granted Ipswich its charter. Normandy was seen as the 'jewel in the crown' of the Angevin Empire. Events in Normandy dominated the final years of Richard's reign. After a long struggle Richard was able to win back most of the land that Philip had taken while he had been a prisoner in Germany. Events in Normandy also dominated much of John's reign. Why was Normandy so important to Richard, John and Philip?

1. **Political reasons** - Many leading English barons controlled lands in Normandy as well as England. The loss of Normandy could damage the leading English barons' confidence in their King's ability to protect his people and provide stability.
2. **Strategic reasons** - If the French King gained control of Normandy he could use it as a base from which to launch an invasion of England. Normandy was just one day's ride from Paris, the French capital. Philip saw Angevin control of Normandy as a serious threat to his kingdom.
3. **Economic reasons** - Normandy was a very wealthy area – the revenues it brought the Angevin crown were close to the total raised from the whole of England. Strong trade links existed between Normandy and England.

Philip II, King of France

The land ruled by the King of France was smaller than modern-day France. However, Philip II was determined to weaken the Angevin Empire and extend his own lands. He was a skilled diplomat and a very good military tactician. 'Cunning' may be the best word to describe Philip! He was very good at taking advantage of his enemies' weaknesses.



TASK

Add a conclusion to your account of why John granted Ipswich a charter. Explain why Normandy was so important and how events in this region were linked to events in Ipswich

The Ipswich Charter 825 Project for schools

ENQUIRY 3:

What were the
consequences of John's
failure to regain
Normandy?



ENQUIRY 3: What were the consequences of John's failure to regain Normandy?

- John's failure to defend his land in France, particularly the 'jewel in the crown' of Normandy was a **crucial turning point** in English history. It set off a chain of events that led to **Magna Carta**.
- By 1204 John had lost control of Normandy to Philip. In order to try and build up a big enough army to win back his lands in France, John raised **taxes** and imposed heavy **finances** on his **barons**. John threatened his barons with violence if they did not pay and when it came to law and order, John favoured the person who could pay him the most.
- John was seen as a cruel and unfair king who did not follow the same rules. Since 1166 the common law stated that royal justice would protect all men and women from barons who used bribery and threats to get what they wanted. However, John was using bribery and threats and getting away with it. The barons demanded change, Magna Carta was an attempt to put an end to the king acting above the law.

THINK & DISCUSS

Look at how John has been drawn in the picture – in particular his face and his pose. What messages do you think Matthew Paris is trying to get across? How can you tell that Matthew Paris did not respect John?



How was John viewed by medieval historians?

Matthew Paris was very critical of King John. We can see this from his illustration and Source 1.

- The **crown** is slipping from John's head, indicating that he is not in control and has no authority.
- John is blocking out the **church**, a sign of him not respecting it.
- John is not sitting on a **throne**, suggesting that he lacks authority. He sits on a campaign stool, an indication that he was often at war and it was not a time of peace and prosperity.
- John's pose looks indecisive and weak.
- John is not holding a **shield** or a **sword**, Paris is suggesting that he was not a powerful soldier.



SOURCE 1 Written by Matthew Paris, a monk from the monastery at St Albans, near London.

John lost Normandy and many other lands because of his own laziness. He always took money from his people and destroyed their property. He hated his wife and she hated him. He gave orders that her lovers were to be throttled on her bed. John was jealous of many barons and seduced their daughters and sisters. He was a tyrant.



THINK & DISCUSS


Look at an illustration of Richard I by Matthew Paris. How does Paris create a positive impression of Richard?

Key events in the reign of 'bad' King John



TASK

Use this timeline to make notes on mistakes that John made during his reign. Imagine that you're a lawyer prosecuting King John for being a bad King. Write a speech to try and win the court case.

1202-1204	 <p>The loss of Normandy John captured Arthur and put him in prison. Arthur was never seen again. One source claimed that John had killed Arthur in a drunken rage and then thrown his body in the River Seine! However, by 1204, John had lost Normandy and most of his other land on the Continent. These defeats earned John the nickname '<u>Softsword</u>'.</p>
1205	<p>John quarrelled with the Pope. John began a quarrel with the Pope over who should be the next Archbishop of Canterbury. John refused to accept Stephen Langton, the Pope's choice. In 1208, the Pope punished John by passing an <u>Interdict</u> over England and Wales. This meant that church services <u>stopped</u> and no marriages or burials could take place. John retaliated by seizing Church property.</p>
1209	<p>The Pope excommunicated John. This meant that he would go to hell when he died. The quarrel ended in 1213 when John accepted Langton as Archbishop.</p>

1214-1215: The barons rebel

John was determined to regain the land that he had lost to Philip. He raised money to build a strong army by increasing taxes and introducing harsh fines on his barons. Many got into debt and found themselves or their family locked up in prison.

To make matters worse, the army that John raised was defeated in France. At the **Battle of Bouvines**, in 1214, Philip was almost killed when he was knocked from his horse, but he was rescued and went on to win what was a lengthy and bloody battle.

John's defeat in France was the final straw for many barons. By 1214 many were starting to think that John needed to change the way he ruled the country. When John refused to listen to their demands, they rebelled. In 1215 the rebel barons captured London and, in June, they forced John to agree to a set of rules about how to govern the country. This set of rules became known as **Magna Carta**, one of the most famous documents in history.

1216-1217: Civil war and a French invasion

John did not change his ways after signing Magna Carta and even asked the Pope to declare the document invalid. The barons invited **Prince Louis** (the son of the King of France) to take over as king.

This led to a brutal **civil war**, as John and his supporters found themselves fighting against the rebel barons and a large French army.

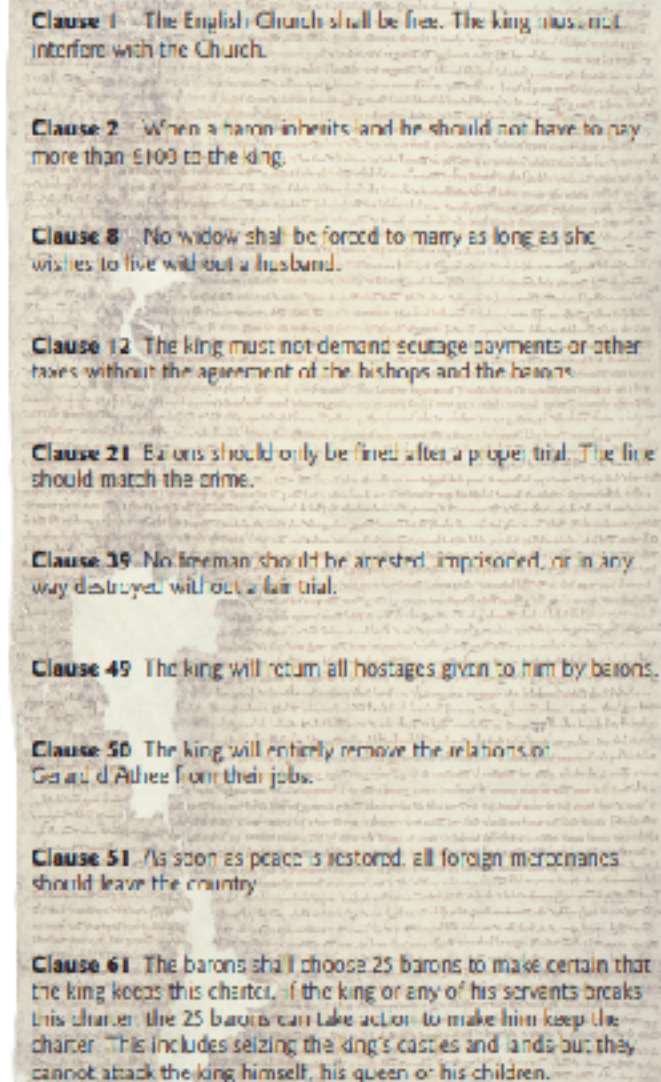
John died in October 1216, but the war continued. Eventually, after major battles at Lincoln and off the coast of Sandwich in 1217, Louis was defeated.

How did King John's actions lead to the 'Great Charter' (Magna Carta)?

If John had defeated Philip and regained Normandy in 1214 it could have improved his relationship with his barons. Victory would have provided some justification for the enormous sums John had raised from his barons to pay for the expedition. However, when John arrived back in England in October his money was gone. Everything he had been working towards for ten years was in ruins.

In the autumn of 1214 it is believed that the rebel barons met at Bury St Edmunds. By this point they were forging links with John's enemies in Wales, France and Scotland. In January 1215 the rebel barons met with John in London. They demanded that John agree to uphold the laws and freedoms written down in Henry I's coronation charter. When John did not respond to their demands the barons moved into open rebellion. In 1215 a group of leading barons rebelled, forcing their king to agree to Magna Carta – a set of rules by which he would govern the country.

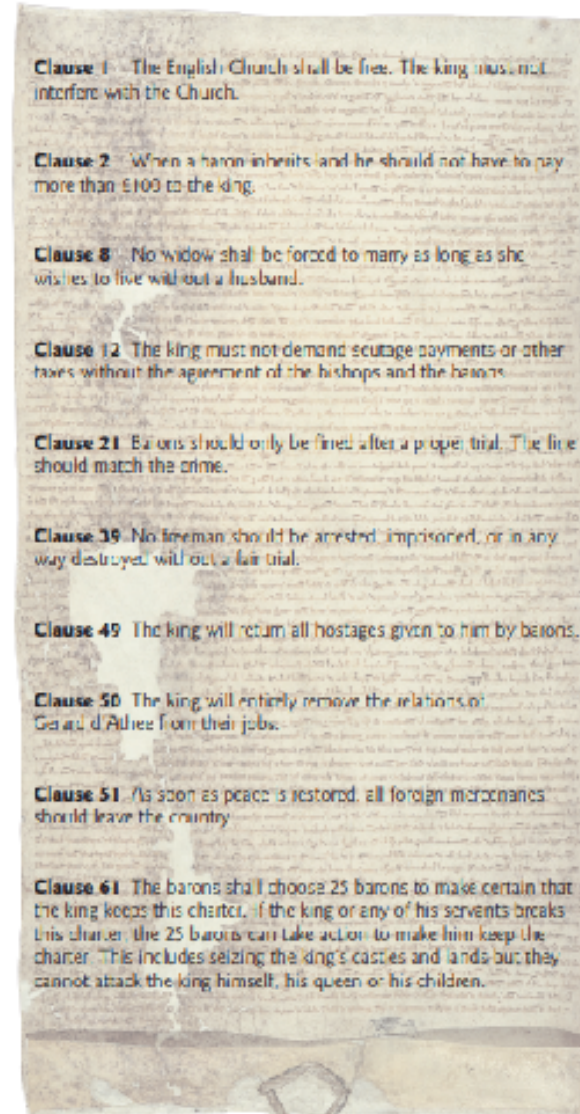
Magna Carta was a set of rules about how the king should treat the FREEMEN of England. PEASANTS were not freemen, so Magna Carta did not protect their rights. Knights, merchants and bishops – as well as barons – were freemen. The barons included these other groups in Magna Carta in order to gain more support. Magna Carta had 63 clauses. They cover a wide range of topics. The most important are listed opposite.

- 
- Clause 1** The English Church shall be free. The king must not interfere with the Church.
 - Clause 2** When a baron inherits land he should not have to pay more than £100 to the king.
 - Clause 8** No widow shall be forced to marry as long as she wishes to live without a husband.
 - Clause 12** The king must not demand scutage payments or other taxes without the agreement of the bishops and the barons.
 - Clause 21** Barons should only be fined after a proper trial. The fine should match the crime.
 - Clause 39** No freeman should be arrested, imprisoned, or in any way destroyed, without a fair trial.
 - Clause 49** The king will return all hostages given to him by barons.
 - Clause 50** The king will entirely remove the relations of Gerard d'Athée from their jobs.
 - Clause 51** As soon as peace is restored, all foreign mercenaries should leave the country.
 - Clause 61** The barons shall choose 25 barons to make certain that the king keeps this charter. If the king or any of his servants breaks this charter, the 25 barons can take action to make him keep the charter. This includes seizing the king's castles and lands but they cannot attack the king himself, his queen or his children.



TASK: Can you link the complaints the barons had to key clauses in Magna Carta?

Complaints from the barons	Clause
1. John is far too hard on us. He takes our land if we do not obey his commands. He even takes our sons as <u>hostages</u> , in case we rebel against him. Look at what happened to the sons of those Welsh barons in 1211. John took 28 as hostages and they were all executed, on John's orders, because he thought their fathers had plotted against him.	
2. Why should we fight in France? My lands in the north of England are a long way from France. I will not gain anything from a war against France. The king wastes money on these pointless wars – which he always loses.	
3. I do not trust John. I want a say in how our country is run, but he never asks us for advice. He spends all his time with his favourites. John will only work with people like Gerard d'Athies from France. John has put him in charge of the castles at Gloucester, Bristol and Hereford. John lets him punish anyone who steps out of line.	
4. John insults the Church, and he punished churchmen because of his quarrel with the Pope. The king should treat the Church fairly.	
5. If John agrees to what we ask how can we make him keep his word? Can we force him to keep his word when he has all these foreign mercenaries to use against us?	
6. John keeps demanding the scutage tax from us. In the past we paid this 'shield money' instead of sending knights to join the king's army in wartime. But John makes us pay scutage even when he is not going to war – and he is demanding twice what we paid Richard.	
7. I know we have to pay the king when we inherit family land, but John demanded over £6000 from me. I only make £550 a year from the land. £100 would be a fairer price.	
8. John is also squeezing money out of elderly women. When my father died, my mother had to pay John over £3000 so that he wouldn't force her to marry again. She really did not want to remarry so she had no choice but to pay the fine.	
9. John uses the law to punish his enemies and help his friends. If John is against <u>you</u> he will not allow your case to be heard in court. I owed him money when I was Sheriff of Lincolnshire and I couldn't keep up the repayments. John imprisoned me in Rochester Castle. He said I would stay there until I paid every last penny I owed.	



Clause 1 – The English Church shall be free. The king must not interfere with the Church.

Clause 2 – When a baron inherits (and he should not have to pay more than £100 to the king).

Clause 8 – No widow shall be forced to marry as long as she wishes to live without a husband.

Clause 12 – The king must not demand scutage payments or other taxes without the agreement of the bishops and the barons.

Clause 21 – Barons should only be fined after a proper trial. The fine should match the crime.

Clause 39 – No freeman should be arrested, imprisoned, or in any way destroyed, without a fair trial.

Clause 49 – The king will return all hostages given to him by barons.

Clause 50 – The king will entirely remove the relations of Gerard d'Athies from their jobs.

Clause 51 – As soon as peace is restored, all foreign mercenaries should leave the country.

Clause 61 – The barons shall choose 25 barons to make certain that the king keeps this charter. If the king or any of his servants breaks this charter, the 25 barons can take action to make him keep the charter. This includes seizing the king's castles and lands but they cannot attack the king himself, his queen or his children.

The Ipswich Charter 825 Project for schools

ENQUIRY 4:

What happened to the
witnesses of Ipswich's
Charter?

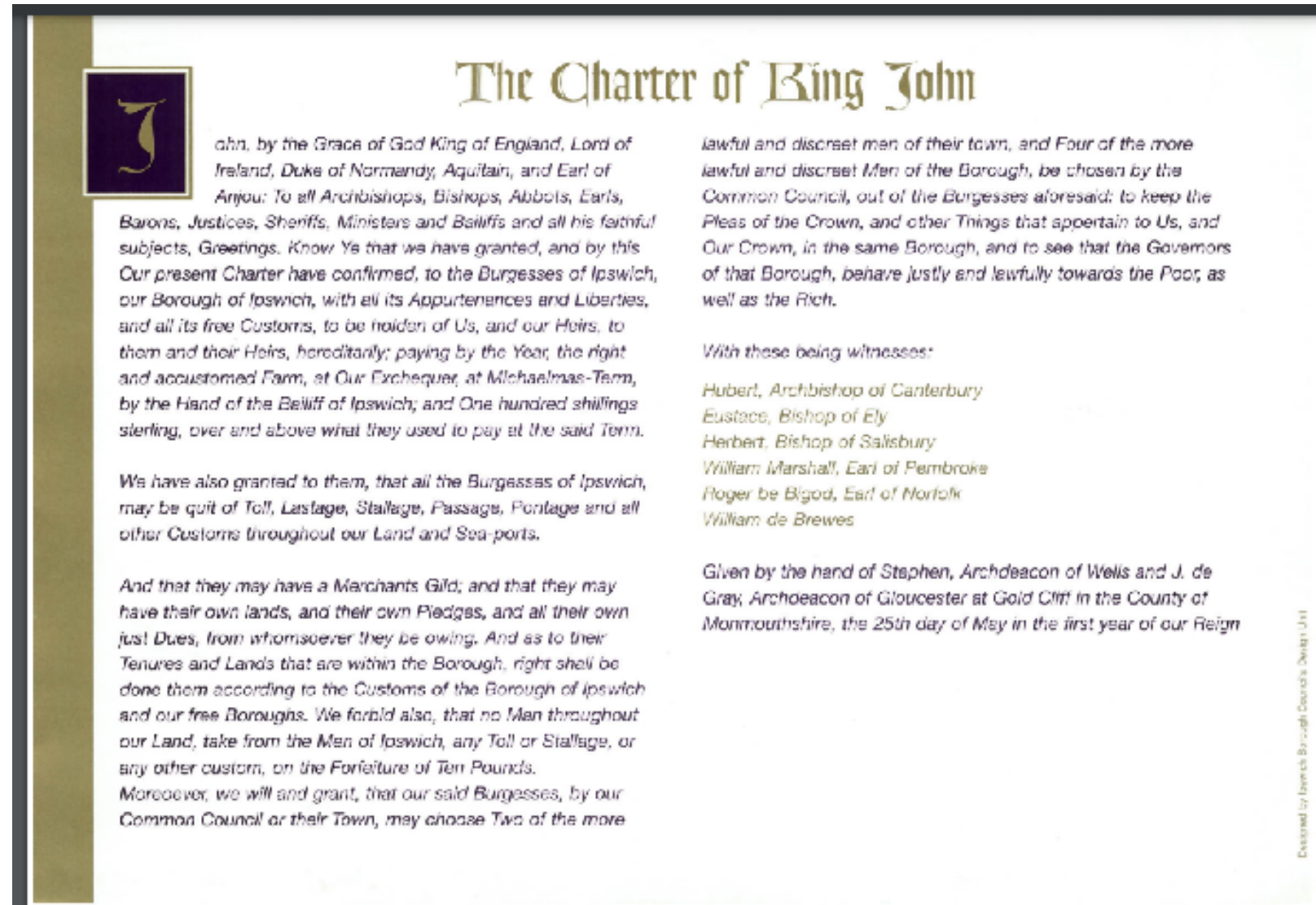


ENQUIRY 4: What happened to the witnesses of Ipswich's Charter?

RESEARCH TASK

What can you find out about the people who witnessed the signing of the Ipswich charter?

What role did the play in John's reign?



The Charter of King John

John, by the Grace of God King of England, Lord of Ireland, Duke of Normandy, Aquitaine, and Earl of Anjou: To all Archbishops, Bishops, Abbots, Earls, Barons, Justices, Sheriffs, Ministers and Bailiffs and all his faithful subjects, Greetings. Know Ye that we have granted, and by this Our present Charter have confirmed, to the Burgesses of Ipswich, our Borough of Ipswich, with all its Appurtenances and Liberties, and all its free Customs, to be holden of Us, and our Heirs, to them and their Heirs, hereditarily; paying by the Year, the right and accustomed Farm, at Our Exchequer, at Michaelmas-Term, by the Hand of the Belliff of Ipswich; and One hundred shillings sterling, over and above what they used to pay at the said Term.

We have also granted to them, that all the Burgesses of Ipswich, may be quit of Toll, Lastage, Stallage, Passage, Portage and all other Customs throughout our Land and Sea-ports.

And that they may have a Merchants Gild; and that they may have their own lands, and their own Pledges, and all their own just Dues, from whomsoever they be owing. And as to their Tenures and Lands that are within the Borough, right shall be done them according to the Customs of the Borough of Ipswich and our free Boroughs. We forbid also, that no Man throughout our Land, take from the Men of Ipswich, any Toll or Stallage, or any other custom, on the Forfeiture of Ten Pounds.

Moreover, we will and grant, that our said Burgesses, by our Common Council or their Town, may choose Two of the more lawful and discreet men of their town, and Four of the more lawful and discreet Men of the Borough, be chosen by the Common Council, out of the Burgesses aforesaid; to keep the Pleas of the Crown, and other Things that appertain to Us, and Our Crown, in the same Borough, and to see that the Governors of that Borough, behave justly and lawfully towards the Poor, as well as the Rich.

With these being witnesses:

Hubert, Archbishop of Canterbury
Eustace, Bishop of Ely
Herbert, Bishop of Salisbury
William Marshall, Earl of Pembroke
Roger de Bigod, Earl of Norfolk
William de Brewes

Given by the hand of Stephen, Archdeacon of Wells and J. de Gray, Archdeacon of Gloucester at Gold Cliff in the County of Monmouthshire, the 25th day of May in the first year of our Reign

Designed by Ipswich Borough Council's Design Unit

s, and our Heirs, to
y the Year, the right
at Michaelmas-Term,
One hundred shillings
pay at the said Term.

Burgesses of Ipswich,
sage, Pontage and all
sea-ports.

and that they may
es, and all their own
g. And as to their
ough, right shall be
e Borough of Ipswich
at no Man throughout
ny Toll or Stallage, or
Pounds.

With these being witnesses:

Hubert, Archbishop of Canterbury

Eustace, Bishop of Ely

Herbert, Bishop of Salisbury

William Marshall, Earl of Pembroke

Roger be Bigod, Earl of Norfolk

William de Brewes

*Given by the hand of Stephen, Archdeacon of Wells and J. de
Gray, Archdeacon of Gloucester at Gold Cliff in the County of
Monmouthshire, the 25th day of May in the first year of our Reign*

William Marshal (1142-1219): 'The Greatest Knight that ever lived'

William Marshal was described at his funeral, by the Archbishop Canterbury, as 'the Greatest Knight that ever lived'. He trained to be a knight in **Normandy** and developed his military skills at tournaments for knights where he proved himself to be strong and brave. After one tournament William's helmet had been knocked so out of shape that he could not get it off until he found a blacksmith who hammered it back into shape – with William's head still inside it!

William served **Henry II** loyally. When Henry's sons rebelled, William fought for Henry, knocking **Richard** off his horse during one battle. Richard recognised William's loyalty and military skill, rewarding him at the start of his reign.

William supported John's claim to the throne and served with him in **Normandy** (1200–03) but fell out with **John** after William did homage to Philip II in order to keep his lands in Normandy. John later attacked William's land in Ireland. However, by 1212 William was back in favour with John and stayed loyal to him when many leading barons turned against John during the **civil war**.



William Marshal (1142-1219): 'The Greatest Knight that ever lived'

Just before he died, John placed the kingdom and his son, Henry, under the protection of William Marshal. It was William who took responsibility for organising the King's funeral and the coronation of John's son as king.

On 11 November, the leading barons who had remained loyal to John formally named William Marshal as protector of the nine-year-old King Henry III, and regent of the kingdom. Marshal decided to take the young King and his court to Bristol, where they reissued **Magna Carta**. The aim was to tempt rebel barons back into the young King's camp – by agreeing to the thing that they had been fighting for. Prince Louis of France did not respond by issuing a charter of his own.

In 1217, under William Marshal's energetic and experienced leadership, the royalists began to fight back. William defeated the French army at the **Battle of Lincoln** and after the French navy was defeated at the **Battle of Sandwich**, Louis gave up his claims to the English throne.



Roger Bigod and ‘the castle on the hill’

Roger Bigod was the son of Hugh Bigod, a powerful baron who rebelled against **Henry II**. Henry II kept strong control over the barons. He destroyed more than 300 of their castles, and built royal castles in areas where he thought the barons were a threat. Henry built **Orford Castle** (see top photograph) on the coast so that he was protected against invasion and could control Hugh Bigod, the most powerful man in East Anglia.

When Hugh died, **Henry II** punished Roger by forcing him to pay his father’s debts and refusing to allow him to take over his father’s earldom.

In 1189, **Richard I** let Roger have his earldom and lands in return for 1000 marks, far more than the going rate. Roger was one of the most powerful barons in the country and the castle in the bottom photograph was the main base of his family.

THINK & DISCUSS – Can you name the castle?

CLUE: Ed Sheeran sang a song about it and included an outline of the castle in the ‘pink shirt’ he designed for Ipswich Town FC.



Roger Bigod – Part 2

Roger's main castle was Framlingham castle. However, in the early years of King John's reign, Roger was often with the King on royal business. He was the Earl of Norfolk and the most powerful baron in Suffolk. Roger fought with John from 1200-1203 in Normandy.

However, in 1215, Roger joined the barons who were rebelling against John. Roger had been put under a lot of financial pressure by King John. The **scutage** (money due in lieu of personal military service) that the earl owed from his many estates was so substantial that by 1211 he was in a lot of debt to the Crown.

Roger and his son led the opposition in East Anglia. In 1215, Roger was one of the 25 barons who signed **Magna Carta** (promising that they would make the king stick to its terms).

In 1216 John marched to East Anglia with a force of mercenaries and laid **siege to Framlingham castle**. Roger was not there and the castle surrendered within two days. However, Roger regained control of the castle when he made peace with Henry III in 1217. Roger died in 1221.



CHARTER CHALLENGE: Design a piece of **artwork** that tells the story of the charter and/or captures the **significance** of Ipswich.

TIPS

- This could be a **collage** or a **cartoon** (see the cartoons that helped you remember King John's reign).
- You could **design a shirt** that tells a story (similar to the new Ipswich Town FC shirt).
- You could design a **mural** to show the important buildings or events from Ipswich's history. Aim to mix modern day images with symbols that tell the story of Ipswich's historically significant past. Remember, Ipswich was **and is** an important town with many stories to tell!



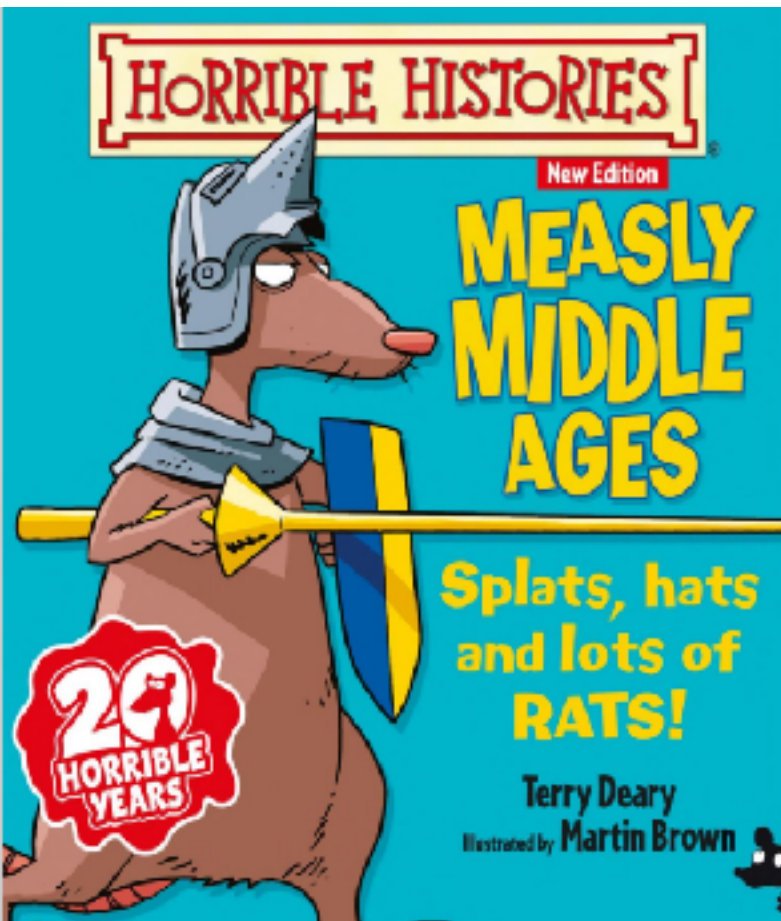
The Ipswich Charter 825 Project for schools

ENQUIRY 5:

Why are town charters
and the great charter
historically significant?



ENQUIRY 5: Why are town charters and the great charter historically significant?



What are your impressions of the Medieval period

TASK

Look at the key events below. Select 4 events or developments that you think happened in the 200 years after Ipswich received its charter (the late Middle Ages)

The Second World War	The Suffragettes	The development of the British Empire
The English Civil War	War with France	The Roman invasion
Plague and the Black Death	The Wars of the Roses	The development of parliament

How should we remember the late Middle Ages?

Today many people see the 13th and 14th century as a period of war, conflict and plague. England was often at **war with France**, rivals fought for the throne in the **Wars of the Roses**, and in the 14th century around 40% of the population was killed during the **Black Death** because of plague.

However, the 200 years after John granted his charter to Ipswich saw remarkable political developments that shaped the way we live today. 1200-1400 saw the introduction of local government and **the development of parliament**. Change happened at a fast pace. Just a few years after Ipswich received its charter, **Magna Carta** was introduced and this established the crucial principle that the king was subject to the same laws as his subjects.

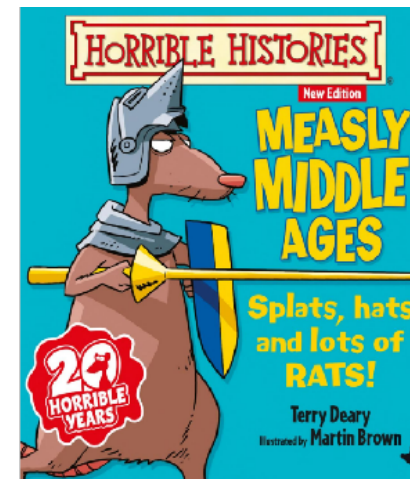
As parliament developed in the 14th century, towns such as Ipswich gained further powers to influence decisions taken by the King. The towns were directly represented along with the **knights** of the shires in the House of Commons. The King and his ministers had to ask the commons to agree to taxes (taxes that King's needed to pay for the ongoing war with France).

As you have already seen **local government also developed** during this period. The townspeople of Ipswich moved very quickly to organise themselves and set up a detailed and efficient way to run their town. This helped to attract merchants from England and Europe to the town to trade goods. Ever since 1200, the rights and freedoms granted to Ipswich had helped the town to thrive and prosper.

TASK – What title would you give a book on the Medieval period that told this story?



Was it all dirt, disease and violence in the late Middle Ages



Did English Kings ever take away the rights Ipswich gained in the 1200 charter?

- In 1283 there was a riot in Ipswich in which seamen disrupted a session of the county court, and **Edward I** took the town into his own hands. Ipswich did not get back its rights and freedoms until 1291 after the townsmen had shown that they were sorry for what happened. The burgesses had to pay for the new charter.
- During the 14th century Ipswich returned to being run via an administrative system that the burgesses of the town had set up, under the authority of the charter granted by John in 1200.
- Ipswich received five further charters during the century. In 1338, **Edward III** confirmed the powers and privileges granted in John's charter. Two charters were granted by **Richard II** (1378 and 1380). Richard's second charter was confirmed by **Henry IV** in December 1399.



TASK: How much can you remember?

Which King's seal is shown above?
Which King issued the decorative charter below to Ipswich?



Did English Kings ever take away the rights Ipswich gained in the 1200 charter?

- ❑ In the 1620s, the majority of the leaders of the town were strict puritans and found themselves in conflict with the view of **Charles I** and Archbishop Laud. **Samuel Ward** (the town's puritan preacher) was imprisoned and in 1636 a visit by the Bishop of Norwich led to a riot. The leaders of Ipswich were blamed for the riot. Had Charles I won the Civil War, Ipswich may well have had its rights, powers and privileges cut or taken away. During the **Civil War**, Ipswich was firmly on the side of parliament – providing men and money for their war against the King.
- ❑ The **Restoration of the monarchy** in 1660 was a turning point for the government of the town. Under Charles II puritans and supporters of the republic were removed from positions of power and replaced with men who swore loyalty to the King. After this was process was finished, **Charles II** finally renewed Ipswich's charter in 1665 (see opposite).
- ❑ The reign of **James II** continued to undermine the powers of local government. In Ipswich, James' government also tried to select Portmen who supported the king to run the town and remove those who opposed him. It was not until James II was defeated in the '**Glorious Revolution**' of 1689 (and replaced by replaced by **William III and Mary II**) that the town regained its right to choose its own portmen.



TASK: How much can you remember?

Which 3 Kings from the list below took away some of the rights Ipswich gained in the 1200 charter?

John	Richard I	Edward I
Richard II	Henry VIII	Elizabeth I
Charles II	James II	Charles III

TASK

Spot the differences:
How is Charles II's
charter for Ipswich
different from
Medieval charters?



How **different** was Charles II's charter from Medieval Ipswich charters?

It starts with a letter 'C' containing a portrait of Charles II. Things have changed and he is not shown on a **throne**. He is, however, wearing very elaborate clothing. The lace around his neck for example would have been extremely expensive. The cloak he is wearing looks like a rich fabric such as velvet or fur. There are no images of **burgesses**.

In the centre top you have the **royal arms** – CR at the top for Carolus Rex, a crown imperial on top of a military helmet, the lion and unicorn each side of the arms. In the centre are the symbols of the constituent parts of the kingdom :

- Three lions for England
- The fleur de lys symbolise France
- A harp for Ireland
- The dragon in the top right is for Scotland
- This means Wales misses out entirely!



How were towns like Ipswich affected by Magna Carta and the development of parliament?

From charters to parliaments

- **Magna Carta** placed kings under the same laws as everyone else in the country. It made it impossible for future monarchs to raise money for war without the agreement of his subjects.
- By 1230 **parliament** had started to develop. Parliament took its name from the French word 'parlement', which means 'the place of discussion'. It soon became the place where rich and very powerful barons met to debate key issues, including whether they would give consent and allow the king to raise taxes for war.
- In 1258, **knights** (from **the shires**) demanded to attend as well (angered by Henry III's unpopular financial and military policies).
- In the 14th century, parliament came to consist of the Lords and the Commons, just as it does today. **The House of Commons** included representatives from all the areas of the country, including the towns.
- Political changes that started with Town charters and Magna Carta laid the foundations for the modern British state. Medieval England **saw a political miracle** that included the development of parliament, law courts and a system of national taxation, dependent on the consent of the people.



HOWEVER, equal rights for all people took time

Although town charters and **Magna Carta** can be seen as the **beginnings** of a more **towards a more democratic country**, many people were excluded from power. Change was slow!

- ✓ It was not until **1928**, for example, that **women** achieved the same voting rights as men in national elections.
- ✓ The right to vote for a member of parliament (MP) was not granted to **working-class people** until the **1860s**.

One of the most famous documents in the world: Why was Magna Carta so **significant**?

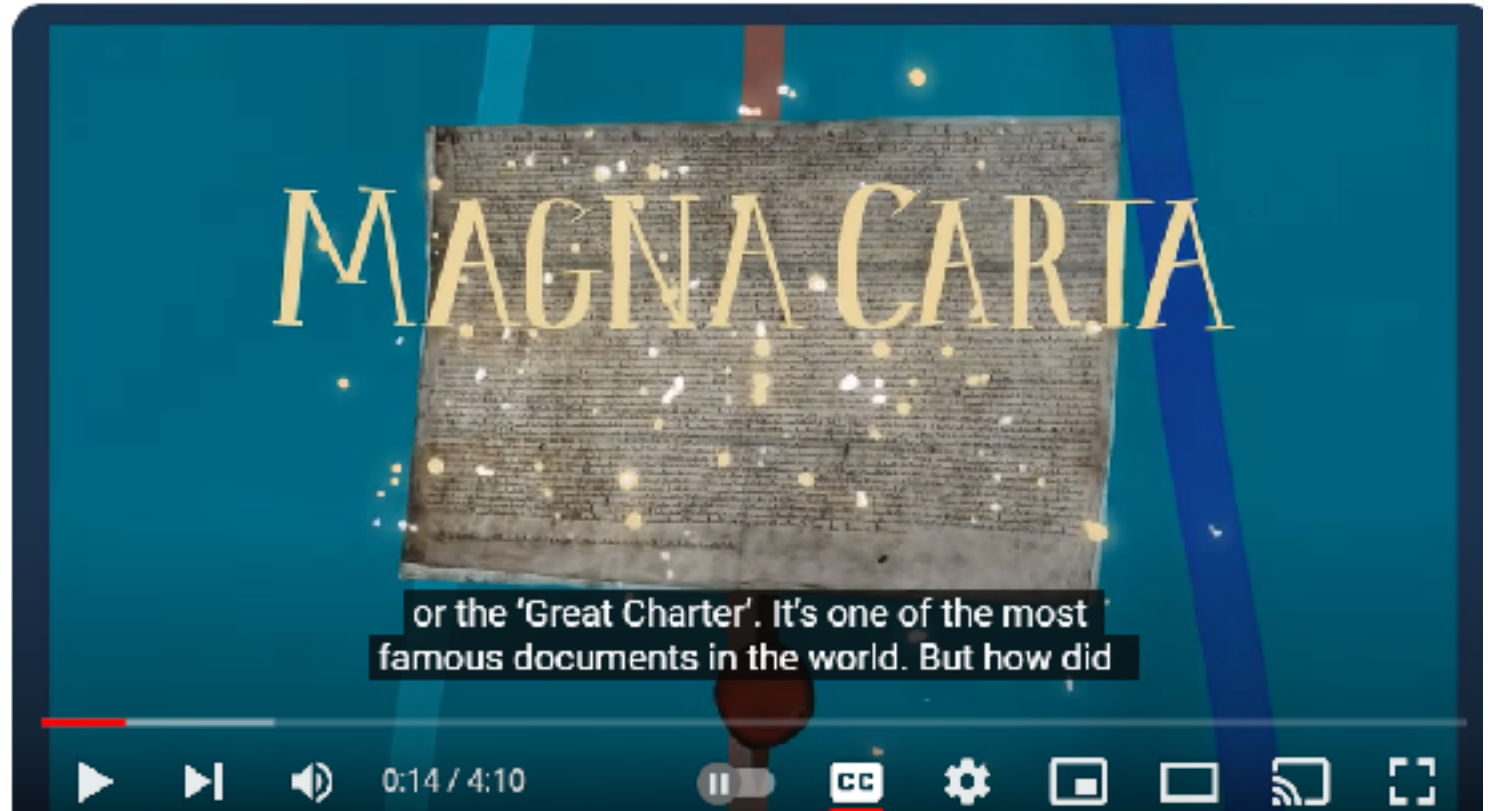
TASK – RESEARCH the short and long-term significance of Magna Carta using these video clips.

British Library (Short term significance)

<https://www.youtube.com/watch?v=7xo4tUMdAMw>

British Library (long term significance) <https://www.youtube.com/watch?v=RQ7vUkbtIQA>

‘The democratic aspiration is no mere recent phase in human history . . . It was written in Magna Carta.’ Franklin Delano Roosevelt, 1941 in his Inaugural address as US President



CHARTER CHALLENGE: Design your own charter (for your school, local community, Ipswich or the whole country)

Magna Carta was a set of rules about how the king should treat the FREEMEN of England. Remember, it did not protect the rights of everyone in the country.

Magna Carta had 63 clauses. They cover a wide range of topics. The most important are listed opposite.

What would your 'Great Charter' look like?

Write 10 clauses or rules that everyone should stick to, no matter how important they are.

These could be rules that the King, the Prime Minister and members of parliament should follow.

However, you might want to think more locally and **design a new charter for Ipswich** which gives people rights but also lists the responsibilities we have to our town and to each other.

Clause 1 The English Church shall be free. The king must not interfere with the Church.

Clause 2 When a baron inherits land he should not have to pay more than £100 to the king.

Clause 8 No widow shall be forced to marry as long as she wishes to live without a husband.

Clause 12 The king must not demand scutage payments or other taxes without the agreement of the bishops and the barons.

Clause 21 Barons should only be fined after a proper trial. The fine should match the crime.

Clause 39 No freeman should be arrested, imprisoned, or in any way destroyed, without a fair trial.

Clause 49 The king will return all hostages given to him by barons.

Clause 50 The king will entirely remove the relations of Gerard d'Athée from their jobs.

Clause 51 As soon as peace is restored, all foreign mercenaries should leave the country.

Clause 61 The barons shall choose 25 barons to make certain that the king keeps this charter. If the king or any of his servants breaks this charter, the 25 barons can take action to make him keep the charter. This includes seizing the king's castles and lands but they cannot attack the king himself, his queen or his children.



The Ipswich Charter 825 Project for schools

ENQUIRY 6:

How and why have interpretations of Richard I and John changed since the Medieval period?



ENQUIRY 6: How and why have interpretations of Richard I and John changed since the Medieval period?

Richard I: Early interpretations

- Richard I is famous as a legendary hero. After his death many legends were created about **'Richard the Lionheart'**. He was remembered as the great soldier king who fought bravely on crusade to win back the Holy Land for the Christian Church. According to legend, this was the king who was cruelly captured returning from crusade and who, on his release from prison, once again displayed his incredible military skills by winning back the lands that his evil brother, Prince John, and the cunning King of France had stolen from him.
- Dramatic stories were produced to explain his nickname – the Lionheart. One told of how, while Richard was in captivity, the King of Germany, angry that his daughter had fallen in love with Richard, planned to murder him by having a hungry lion released into his cell. But Richard was able to kill the lion by thrusting an arm down the beast's throat and pulling out its heart – which he sprinkled with salt and ate in front of the king.
- For many years after his death Richard was seen as a model of what a good king should be. In Victorian times, a larger-than life statue of Richard was placed outside the Houses of Parliament, where it still stands today.



THINK & DISCUSS:

How is Richard I portrayed as a national hero in this statue?

How is Richard portrayed in this Hollywood film clip (Robin Hood Prince of Thieves)?

<https://www.youtube.com/watch?v=a5mwTy-Rxr0>

How have interpretations of Richard I changed over time?

Criticisms of Richard I

Over time, some historians began to criticise Richard. The eighteenth century historian, **Laurence Echard**, labelled Richard 'the king who was never there'. Richard was criticised as a king who neglected his kingdom and wasted its resources abroad. In the twentieth century, some historians continued to follow this line of argument. They criticised Richard's government of England. **Austin Lane Poole** criticised Richard for his lack of political wisdom. Poole suggests that Richard made bad decisions when ruling the country. **Michael Markowski**, called Richard 'a dismal failure'. He argued that Richard should not be seen as a hero but instead a king obsessed with war: 'a man who merely wanted to fight hand to hand forever'. This interpretation is reflected in these film clips from 'Robin Hood (2010)

- <https://www.youtube.com/watch?v=IGt29EqntB4>
- <https://www.youtube.com/watch?v=7qX6JfFdpRw>

The case for the defence

In the last twenty years, some modern historians have seen Richard in a far more positive light. They argue that Richard was a very skilful military leader who successfully defended the Angevin Empire. **Thomas Asbridge** argues that Richard was a military genius: 'the best commander of his generation' and 'a fearsome opponent, unrivalled among the crowned monarchs of Europe'. Historians such as **John Gillingham**, have argued that as well as being a great military leader, Richard was a skilled diplomat and a clever politician. They argue that Richard was not an irresponsible monarch who neglected England. Instead they present him as a king who set up a strong system of government that did not always need the king to be there, personally making decisions. In addition, they praise Richard for the way he kept his barons 'onside' and developed a good relationship with the Church.

TASK: Compare these two **interpretations**. How do they differ?

1. What criticisms does Warren make of Richard I?
2. How does Gillingham defend him?

Interpretation 1: Extracts from *King John*, 2nd edn. by W.L. Warren, published in 1997

Richard was generally disliked in his own day. He was an ungracious boor ... obsessed with fighting. He was lionhearted but soulless. Warfare was his speciality and everything else was sacrificed to indulging it. Richard was anxious to be off on the exciting adventure of a crusade ... Everything was sacrificed to raise money for it, even good government. His father's officials, who had been loyal to the last, were made to pay heavily to gain the King's goodwill. Everything was for sale – privileges, lordships, earldoms, sheriffdoms, castles, towns.

Richard was no judge of men and an ignorant and irresponsible monarch. Richard had a military flair that John lacked, especially when it came to leading from the front. Richard was indifferent to the business of government and administration. Men respected his skill and his strategic sense, but there was little for which to love him. He might seem heroic at a distance but those who lived under his rule received the news of his death with relief.

Interpretation 2: Extracts from *Richard I* by John Gillingham, published in 1999

Thanks to the efforts of Saladin, Leopold of Austria and Philip II, few rulers can have faced greater difficulties than Richard. No earlier or later king took on a challenge remotely comparable with the task of taking a fleet to the eastern end of the Mediterranean and there facing, even facing down, an adversary as formidable as the great Saladin. The conquest of Cyprus and the recovery of the coastal cities of Palestine brought substantial and lasting gain. Had he headed straight for Jerusalem ... it could not have been held for long.

[In 1194] Richard left the kingdom in the care of one of the most outstanding ministers in English history, Hubert Walter ... Hubert Walter was a resounding success. No king had a better servant. Richard taxed more heavily than his father. Complaints against the level of taxation were coupled with an acceptance that the money was properly spent on a just war by a ruler who, unlike his father, was admired by his own subjects.

The Empire collapsed in 1203–04 because John's shortcomings as a ruler enabled King Philip to take advantage. In 1198–99 Richard was winning the war against Philip. This was in part because he was a highly competent ruler, unusually effective across the whole range of a king's business, administrative, diplomatic and political as well as military.

Interpretations of John

- John's popular reputation is also linked to legend, especially the Robin Hood legend in which John is a cruel, greedy king who plots against his brother, puts innocent people in prison and raises unfair taxes.
- In Walt Disney's 1973 *Robin Hood* cartoon film, John is shown as vain and cowardly; his crown constantly slips from his head because he has stolen it from Richard.
- In a more recent Hollywood film (*Robin Hood*, 2010), John is portrayed as a sly, cowardly, incompetent and completely dislikeable monarch. These films show how, in popular perception, John is 'Bad King John'.

THINK & DISCUSS

What impression of John is shown in these two films?



<https://www.youtube.com/watch?v=sGzaqEtJCok>
https://www.youtube.com/watch?v=AN_gG7V1M5M

How have interpretations of King John changed since the medieval period?

Michael Wood argues that History changes as more is discovered and as new perceptions develop, 'History is never fixed, always in the making, never made. But it is always made by us.'

THINK & DISCUSS
Why do historical interpretations change over time?

How have historians viewed King John?

Tudor (1485–1603)



John the hero...
Tudor historians thought that John was right to stand up to the Pope. They saw the Pope as a power-crazy villain who wanted to control England. They blamed the Pope for many of John's problems. They also thought that the barons were wrong to rebel against John.
Source 1 was read out in all churches on Elizabeth I's orders.

SOURCE 1 An extract from *Homily Against Disobedience and Wilful Rebellion*, 1571.

'What a disgrace and a shame that the barons rebelled against King John and did not give him help in his lawful wars.'

- People in Tudor times saw John as an earlier version of Henry VIII. Both kings quarrelled with the Pope, and both kings stood up to the Pope.
- They also admired firm, saint-kings who took a leading role in running the country. They believed that rebellious harmed everyone in the country.

Victorian (1837–1901)



John the villain...
Victorian historians saw John as a failure and a villain. They thought he caused his own problems and was cruel and wicked king. The Devil is depicted.

SOURCE 2 An extract from *Short History of the English People*, written by J. R. Green in 1875. This book was a bestseller and was translated into many different languages.

'His punishments were cruel: the starvation of children, crushing of old men under copes of lead. His court was a brothel where no woman was safe from the royal lust. He laughed at priests even during his coronation. Hell is spoiled by the foul presence of King John.'

- Victorian historians, such as Green, used the medieval chronicles to find out about King John. Roger of Wendover and Matthew Paris were their main sources of information.
- Victorians disliked John because of his attitude towards religion and the issue of his many affairs with rich women. They judged John by their own moral standards.
- Victorians thought that Magna Carta was very important. They believed that the country should be run in a democratic way, with as many people as possible – not just the king – having a say in how it was governed. Victorians saw Magna Carta as Britain's first step towards becoming a more democratic country.

1950s and 1960s



John the good...
From 1950 some historians began to challenge the traditional interpretations of John. They were more sympathetic, saying he worked hard. A few even claimed he was an administrative genius, who ran the country as well as anyone could have done. These historians also argued that John was very unlucky. He was up against a powerful Pope and a skilled King of France, who had far more money than him. They also said that John inherited problems from his father and brother.

SOURCE 3 Written by David Bates in 1954.

'In some areas John faced impossible difficulties. In others he came close to success. John's failure deserves some sympathy.'

SOURCE 4 Written by John Gillingham in 1984.

'In fact, John was a very poor king. He was useless at his most important job, managing the barons.'

- During this period historians started to study the government records from John's reign in detail. There are far more records from John's reign than from the reigns of previous kings. This meant that historians could find out far more about what the king's government did each day.
- Historians started to say that the accounts written by medieval monks were unreliable. They argued that the monks were biased against John, because they were keen supporters of the Pope and the barons. They claimed that the chroniclers had created a myth (or 'artificial story'), which was worthless and very misleading.

Modern historians (1980s and 1990s)



John the not so good...
Modern historians have mixed views about John. Most accept that he did have some good qualities. However, they agree that historians in the 1950s and 1960s made too much of his skills. They agree that John faced many problems, but say that his actions often made these problems far worse. John had serious faults in his personality that got him into trouble.

- Modern historians claim that medieval government records gave the impression that John was better than he actually was. Just because there are lots of records showing John hard at work does not necessarily mean he worked harder than previous monarchs. Rather, it was not until John's reign that detailed records were kept.
- They also point out that he worked harder in England precisely because he was a failure. John had more time to get involved in running England because, by 1204, he had lost his land in France.
- They agree that, although monks were prejudiced against John, no one wrote anything that said John was a success.

Interpretations Challenge:

Match the writer to the source

TASKS

The writers and their quotations have become muddled up.

1. Use your knowledge and understanding to work out the time period in which each source was written. Link the correct writer with each quotation.
2. Explain how you came to each decision. Remember that what people wrote about John can tell us a lot about when they were living.
3. Which source do you think offers the most accurate description of King John? Explain your answer.

SOURCE A *What marks John out from the long list of our kings and queens, good and bad, is that there is nothing in him that for a moment we can admire or pity.*

From *King John*, written by W.L. Warren in 1961.

SOURCE B *This noble King John, as a faithful Moses withstood proud Pharaoh [the Pope], for his poor Israel [England] meaning to bring it out of the land of darkness. But the Egyptians [barons] did against him rebel and his poor people did still in the desert dwell.*

Written by William Stubbs in 1873. Stubbs based his opinion on sources written by monks such as Roger of Wendover.

SOURCE C *John had potential for success. He had intelligence, administrative ability and he was good at planning military campaigns. However, too many personality flaws held him back.*

From a thirteenth century chronicle, written by Matthew Paris.

SOURCE D *The picture of a monster, put forward by Roger of Wendover and Matthew Paris, must be rejected for ever. John had the administrative ability of a great ruler but, from the moment he began to rule, rivals and traitors tried to cheat him out of his inheritance. As he wrestled with one problem, more enemies sprang upon his back.*

From *The Troublesome Reign of King John*, written by John Bale in 1538–39.

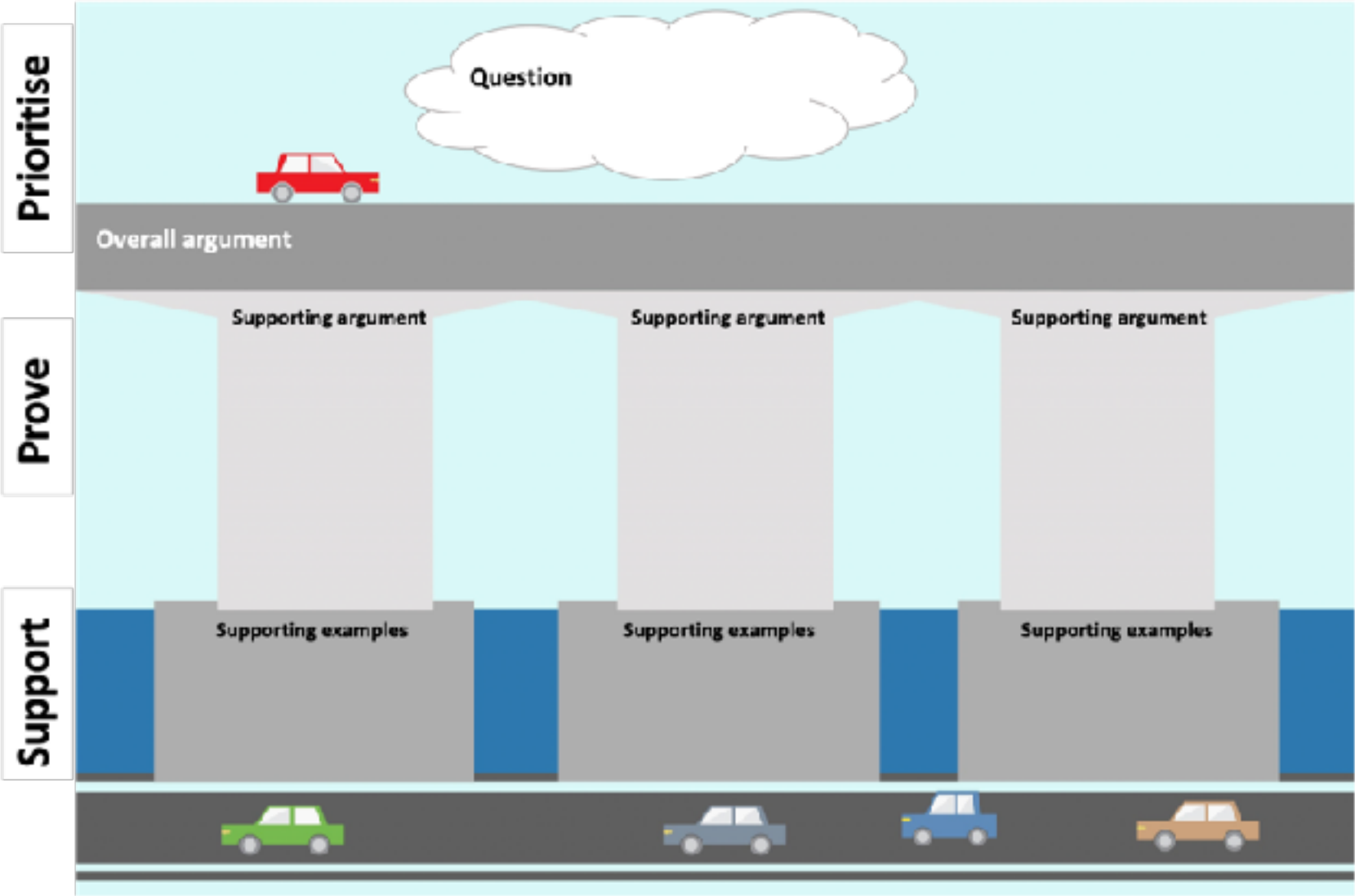
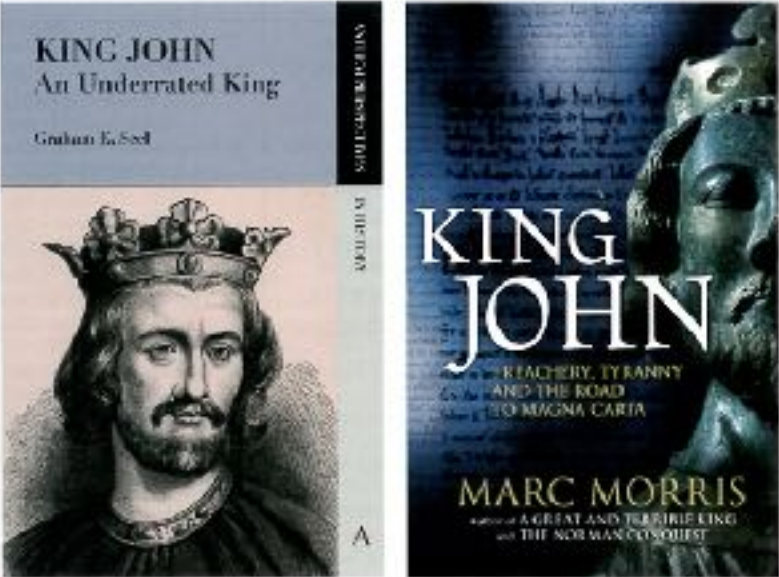
SOURCE E *John was a tyrant. He was a wicked ruler who did not behave like a king. He was greedy and took as much money as he could from his people. Hell is too good for a horrible person like him.*

From *King John*, written by R.V. Turner in 1994.

Interpretations of King John: How do they differ?

TASK

Fill in an interpretations bridge for both of the articles on the next slide.
How do Seel and Morris support their arguments?



Interpretation 3: Extracts from an article by Graham E. Seel published in History Today, February 2012

There had never been a king who devoted himself so keenly to the job of ruling, John's government was vibrant and forward-looking. A close study of the record evidence calls into question the stereotype of a wicked John, to be replaced by an image of a monarch possessed of terrific energy.

His reign coincided with what most historians agree were two peculiarly resilient and clever adversaries. Philip Augustus of France and Pope Innocent III (r.1198-1216).

The loss of European possessions was more the result of structural deficiencies than the inadequacies of John, it was naturally disposed to fracture. Moreover John's inheritance was made yet more problematic because it seems likely that England was financially exhausted in 1199.

John's refusal to accept the papal nominee, Stephen Langton, as Archbishop of Canterbury fits well with the fact that each of his predecessors had at some point experienced tensions with the Church.

(Magna Carta) as a peace settlement was always destined to be short-lived... Acceptance would have rendered John a phantom king. No monarch of the time could have accepted Magna Carta.

If John's forces had won at the great set piece battle at Bouvines in 1214 (and they almost did), then it seems as though there would have been no Magna Carta and no civil

Interpretation 4: Extracts from a post published on the History Today website in 2015 by Marc Morris

By the time of his death in 1216, and for centuries thereafter, John was regarded as the worst king ever to have sat on England's throne, a reputation that was well deserved. John was treacherous, tyrannous, cowardly and cruel. He betrayed his elder brother, Richard the Lionheart, by trying to usurp the throne while Richard was on a crusade.

He extorted more money from his English subjects than any king since the Norman Conquest. He inherited a vast dominion on the continent, including Normandy, Anjou and Aquitaine, but lost almost all of it and failed to win any of it back. He took prisoners and hostages, several of whom he starved to death.

In the end John's subjects rose up in arms against him and demanded reform, forcing the King to commit to Magna Carta. When he rejected the charter a few weeks later the result was chaos and civil war. The English barons offered his crown to the son of the king of France, who invaded and occupied half of the country, including London. John died with his kingdom in flames and his reputation deservedly in tatters... Reputations rise and fall, but King John's deserve to remain at the very bottom.

